

2014
www.KandBSolutions.com

SPECIFICATIONS | PRICE LIST

Kitchen and Bath **SOLUTIONS**



NOTES

REV 2/14

Item Description	Page	Item Description	Page
------------------	------	------------------	------

42" High Wall	17	Base Blind Corner Cabinets	30
36" High Wall	17	Island Ideas	31-33
30" High Wall	18	Utility Cabinets	34
24" High Wall	18	Tall Decorative End Panels	34
21" High Wall	18	Oven Cabinets	35
18" High Wall	19	Vanity Sink Cabinets	36
15" High Wall	19	Vanity Sink Drawer Cabinets	36
12" High Wall	19	Vanity Base Cabinets	37
24" Deep Wall Cabinets	19	Vanity Drawer Base Cabinets	37
15" Deep Wall Cabinets	20	Vanity Decorative End Panel	37
42" High Wall Cabinets	20	Vanity Knee Drawer	37
36" High Wall Blind Corner	21	Office Suite Collection	38
30" High Wall Bind Corner Cabinets	21	Pullouts	39
Diagonal Corner Wall Cabinets	22	Shelving	41
Wall Decorative End Panels	23	Valances	41
Bookcases Wall	23	Filler	42
Wine Rack Cabinets	24	Base Angle Fluted Fillers	42
Microwave Oven Cabinets	24	Fluted Fillers	43
Desk Organizer	25	Toekick Cover	44
Decorative Wood Hood	25	Skins	44
Glass Doors	25	Based End Panel Vener	44
Base Wastebasket Unit	26	Finish Panels Veneer 1/4"	45
Base Decorative End Panel	26	Refrigerator End Panel Veneer	45
Full Height Door Bases	26	Wood Mouldings	46
Base Cabinets	27	Moulding Design Ideas	47
Drawer Base Cabinets	27	Corbel	47
Peninsula Base Cabinets	28	Decorative Legs	48
Sink Base Cabinets	28	Rollout Shelves	48
Sink Base Floor	28	Modification Services	48
Diagonal Corner Sink Base	29	Base Blind Specification	50-51
Diagonal Corner Sink Fronts	29		
Corner Sink Base Cabinets	29		
Lazy Susan Base Cabinets	29		

Company Overview

Kitchen & Bath Solutions (KBS) is a cabinet wholesaler serving trade customers throughout the U.S., with a heavy concentration of business in the Atlanta, GA metro area. KBS sells its products only to cabinet dealers, builders, remodeling contractors, and designers. The numerous services that KBS offers its customers include cabinet assembly, modified or custom-built cabinets, custom finishes, jobsite delivery, and professional design services with jobsite measuring.

KBS produces high quality, well-crafted cabinetry that works for all types of residential and commercial applications including kitchen, bath, laundry, office, basement, and recreational room usage. KBS is staffed with experienced cabinetry professionals throughout the company. From its front line customer service staff to its delivery personnel, the KBS team is committed to providing quality products and attentive service at a value price point.

For more information, please contact KBS directly.

Location:	560 Webb Industrial Drive Marietta, GA 30062
Phone:	(770) 974-1777
Fax:	(770) 429-1743
Orders:	order@kandbsolutions.com
Web:	www.kandbsolutions.com
Office Hours:	7:30 am – 5:00 pm M-F
Warehouse Hours:	7:30 am – 3:30 pm M-F

**** Closed Weekends & Major Holidays**

What's New in 2014

The KBS product line offers exciting new changes for 2014. There are two new cabinet options, Charleston Walnut, and Metro Colonial White.

Going forward, KBS will feature three lines known as Premium, Standard and Builder:

CABINET LINE	DOOR STYLE	
PREMIUM	Charleston Walnut Charleston Tapioca Glaze Metro Colonial White	Plywood Construction Soft close doors, Dovetail Soft close drawers
STANDARD	Charleston Chestnut Metro Saddle Kennesaw Saddle	Plywood Construction Dovetail Soft close drawers
BUILDER	Manchester Espresso (plus future Manchester color options)	Furniture Board

Charleston Walnut and Metro Colonial White have several upgraded features, including:

- ✓ Soft-Close hinges as a standard feature on all doors, replacing the need to attach separate soft-close hardware at the time of installation.
- ✓ All 30", 33", and 36" wide base cabinets will feature butt doors without the center wood mullion, allowing for full-sized cabinet openings.
- ✓ Base Lazy Susan trays will be all wood, and optimized for better storage capacity and function.
- ✓ Industry standard • 1.5" sized stiles and rails, allowing easier usage of third-party accessories from companies like Rev-A-Shelf.
- ✓ Drawer headers on Metro Colonial White will feature 5-piece wood headers with a recessed MDF center panel.

The **BUILDER** line will feature 30" and 36" wall cabinet heights, with the 42" wall cabinet height being phased out beginning immediately in 2014.

The **STANDARD** line will be built similar to the **PREMIUM** line in that it will feature the same larger opening (no center mullion) on bases and walls that are 30", 33" and 36" wide. This line will also convert to the standard 1.5" stile and rail construction. As 2014 progresses, KBS will continue selling out existing inventory. As the existing inventory is sold out, it will be replenished with inventory that will feature the newer type of construction. For a period of time, there will be orders that will contain both styles of construction, but no changes will be visible from the exterior view of the product.

Limited Lifetime of Warranty

Kitchen and Bath Solutions (KBS) warrants, to the original purchaser only, that its cabinets will be free from defects in material and workmanship for a period of one (1) year from the date of purchase. Should any product fail due to defects in material or workmanship under normal use during this period, KBS will, at its own discretion, repair or replace defective parts. Defective parts must be delivered to the KBS office. If components are replaced, KBS cannot guarantee an exact finish match to the existing product, due to color variation and the natural aging process. Drawer guides and hinges are under warranty for the life of the product.

This warranty applies only to single family, non-rental, non-commercial residences. This warranty does not cover damage from misuse, abuse, neglect, improper storage, defects caused by improper installation, moisture or heat-related damage, or normal wear and tear.

For all KBS doors and drawer fronts that are solid wood, understand that wood may respond adversely to extreme high and low temperature and/or humidity conditions. Visible lines where wood is joined is a natural and acceptable occurrence, and is not considered a defect or cause for replacement under the warranty. These lines are especially common and visible with painted finishes.

Naturally occurring wood characteristics such as color, grain variation, mineral streaks, and knots are not considered defects. Color change may result from aging and exposure to light or heat. These changes are not covered under this warranty.

It is the responsibility of the KBS customer to educate the retail end user of KBS products about the KBS Limited Lifetime Warranty.

Return Policy

KBS does not accept returns of any assembled cabinets, whether standard sizes or customized in any way. Flat pack cabinets that have been assembled offsite or modified in regards to size and/or finish also cannot be returned.

KBS accepts returns and applies a 25% restocking fee for standard flat pack cabinets in a standard finish and all standard finish trim and moldings from the KBS catalog. Items must be in perfect condition and in original packaging to be eligible for a refund. If KBS cannot resell the item as new, KBS reserves the right to offer no refund on the item.

Example: You want to return a W1230 Metro Saddle flat pack that cost \$70.00. You paid sales tax of \$4.20 on this item. The W1230 is in perfect shape and in its original packaging. KBS will refund you 75% of the \$70.00 purchase price, so your refund would be \$52.50 (\$48 for the cabinet and all sales tax).

Order Process & Payment

Orders must be paid in full prior to pick-up or delivery. **THERE ARE NO EXCEPTIONS.**

KBS customers are provided with an electronic KBS Order Form and are required to use it to submit orders. If you do not have the most current version of the KBS Order Form, please call Customer Service or your Sales Representative to obtain it.

Email all orders to: ORDER@KANDBSOLUTIONS.COM

The KBS Order Form is an excellent tool for quoting jobs and knowing your costs, which vary based upon door style, finish, and other variables. For a tutorial on how to use the KBS Order Form, please contact your KBS Sales Representative and they will be happy to help you.

Order Confirmations

After you submit your KBS Order Form electronically via email, you will receive an Order Confirmation in return, usually within 24 hours. **PLEASE TAKE THE TIME TO REVIEW THE ORDER CONFIRMATION.** You may request changes to your order up to 48 hours after the confirmation was emailed to you. It is at the discretion of KBS whether or not to grant order change requests after 48 hours.

REMEMBER, you are ultimately responsible for all items on the Order Confirmation, so it is important to review it and confirm that it is 100% correct. If no confirmation is received within 48 hours, the order is considered correct as is and any errors at that point are the responsibility of the customer.

Order Lead Times

Due to unpredictable fluctuations in sales volume throughout the year, KBS cannot guarantee order lead times. However, KBS can generally complete your order and make it ready for customer pickup or KBS delivery within the following lead times:

TYPE OF ORDER	LEAD TIME
FLAT PACK, IN STOCK, STANDARD FINISH	3 – 5 Business Days
ASSEMBLED, IN STOCK, STANDARD FINISH	5 – 10 Business Days
PAINTED ORDERS (Flat pack or assembled)	20 – 30 Business Days
CUSTOM or MODIFIED CABINETS	10 – 14 Business Days
IN STOCK, STANDARD FINISH TRIM & MOLDINGS	1 -2 Business Days
RUSH ORDER – IN STOCK, FLAT PACK CABINETS or TRIM & MOLDINGS*	Same Day (Order in by 1:00 pm EST)*
RUSH ORDER – IN STOCK, ASSEMBLED STANDARD CABINETS*	1 – 2 Business Days*

*RUSH ORDERS receive an additional 20% convenience charge, may include a maximum of 10 cabinets, and must be for in-stock cabinets that are of a standard size and finish only.

AS ALWAYS, place orders as much in advance as possible to ensure materials are available when you need them to be!

CUSTOMER PICKUP, KBS DELIVERY, and LTL SHIPMENTS

KBS offers the convenience and flexibility of receiving your orders in a variety of ways. The following guidelines apply:

CUSTOMER PICKUP:

You may pick up your orders at the shipping / receiving dock area at KBS any time between the hours of 7:30 a.m. and 3:30 p.m. Monday through Friday, except major holidays.

It is suggested you call KBS in advance to ensure your order is ready for pickup as it provides us extra time to ensure a smooth visit.

It is the responsibility of the customer to verify the order as it is being loaded. Once the paperwork is signed, the order has been accepted as noted on the shipping paperwork. At that point, if anything is missing, the customer will be charged for the said items as a new or add order.

KBS DELIVERY:

KBS offers jobsite delivery service Monday through Friday, except major holidays. KBS delivery charges are based on two delivery zones, as follows:

For deliveries 0-75 round-trip miles from KBS: \$200

For deliveries 76-150 round-trip miles from KBS: \$275

The KBS delivery truck can typically carry up to 30 assembled cabinets plus trim and moldings. For jobs that require more than one delivery run or are further than 150 round-trip miles from KBS, please contact Customer Service for special delivery rates.

WHAT TO EXPECT:

- ✓ KBS delivery personnel will call the customer to confirm delivery time on the day of the delivery.
- ✓ KBS will carry your items into a single room on the jobsite's main floor or garage/carport area.
- ✓ It is the customer's responsibility to distribute the cabinets throughout the dwelling (upstairs, downstairs, various rooms, etc.).
- ✓ A qualified signer must be present to receive the order and sign for it. Once an order has been signed for, it is considered complete by KBS.

LTL SHIPMENTS:

If you need your order delivered to a location beyond the range of the KBS delivery zone, then you will require LTL (Less Than Truckload) shipping services. For all LTL scheduling and shipment rates, please contact KBS Customer Service.

Problems must be reported within 3 days of receipt.

KBS PROFESSIONAL DESIGN SERVICES

The job of designing the perfect kitchen or bath, or other cabinet area, requires an uncommon level of knowledge, experience, and creativity. Our professional design service will not only help present a professional image, but will also help you price your job and order your materials more accurately.

When you order a Professional Design Package, you will receive dimensional drawings in the form of printouts and/or digital copies via email. You are entitled to the first version, plus two free revisions. Beginning with the third revision, there is an additional charge of \$25 per revision.

PREMIUM PACKAGE: \$250

This includes a KBS designer visiting the jobsite, performing a measurement of all cabinet areas, and dimensional design drawings with up to two revisions.

STANDARD PACKAGE: \$125

This includes the same deliverables as the Premium Package, except KBS does not go onsite to measure. Instead, the KBS customer provides all measurements.

QUICK DESIGN PACKAGE: \$75

This is for jobs that include 9 cabinets or less, typically a bath or small kitchenette. The KBS customer provides all measurements.

KBS STANDARD & SPECIALTY FINISHES

STANDARD FINISHES (no extra finish charge)

KBS currently carries seven (7) standard cabinets in stock:

- ✓ Charleston Walnut
- ✓ Charleston Tapioca Glaze
- ✓ Charleston Chestnut
- ✓ Kennesaw Saddle
- ✓ Metro Colonial White (in stock approx. late March 2014)
- ✓ Metro Saddle
- ✓ Manchester Espresso

SPECIALTY FINISHES +40% KBS offers the following specialty finishes for an additional 40% charge:

- ✓ Colonial White
- ✓ Designer White
- ✓ Sage
- ✓ Cabernet
- ✓ Oatmeal
- ✓ Mocha
- ✓ Hazelnut
- ✓ Black
- ✓ Seal Gray

CUSTOM FINISHES +40% + \$250 KBS offers custom paint finishes for same cost as Specialty Finishes plus a \$250 one-time charge. (Please see the following page for details about custom paint orders.)

DISTRESSING +15% KBS can distress the finish for an additional 15% charge.

GLAZES +15% KBS can add a glaze to any specialty or custom finish for an additional 15% charge.

Due to varying levels of demand, KBS cannot guarantee the production time for any non-standard finish orders. For such orders, expect at least 4 extra weeks for your order to be completed and ready for pickup or delivery. Always check the current timeframe with KBS at the time of your order to properly set your customer's expectation.

KBS CUSTOM FINISH PROCESS & POLICY

KBS follows these steps for all custom finish orders:

1. Customer supplies a paint code and name (i.e. SW7010 White Duck) or an item showing their desired finish.
2. Customer pays a one-time charge of \$250.
3. KBS orders custom paint and produces a sample door at a cost to the customer.
4. KBS presents the sample door to customer for approval. Approval is granted by the customer signing and dating the back of the sample door in black Sharpie, and returning the door to KBS.
5. For the order to be produced, the customer pays a deposit of 30% of the total order cost.
6. KBS produces the custom finish order.
7. Customer pays the remaining 70% balance due prior to order pick up or delivery.

Product Overview

Kitchen and Bath Solutions offers a level of distinction unheard of in our marketplace. And not only that, but you can too! By becoming a Solutions dealer you can take advantage of our true "Any Color" paint option. Using only the finest coloring and finishing products we offer you and your homeowner the ability to match any paint color offered in the paint industry for color matching. We do this in fantastically short time and for very reasonable up charges. So enjoy the standard colors we offer below; Charleston in chestnut or Tapioca glaze, as well as the Metro and Kennesaw in Saddle or indulge your design imagination in one of our frequently requested non-standard colors; or . . . go completely wild and pick one of your own!

Charleston Chestnut and Tapioca



Chestnut



Tapioca w/
Chocolate Glaze

Kennesaw and Metro Saddle



Saddle



Saddle

Charleston Walnut and Metro Colonial White



Walnut



Colonial White

Key Features:

- ✓ True 1/2" All Wood Box
- ✓ Solid Wood Dove Tail Drawer
- ✓ Full Overlay Drawer and Doors
- ✓ True 3/4" Plywood Shelf
- ✓ Corner Blocks for Stability
- ✓ Five Piece Mitered Drawer and Doors on the Charleston Door
- ✓ UV Finished Interior
- ✓ Full Extension Under Mount Cushion Close Drawer Guides

Popular Upgraded Color Options



Black



Distressed
Black



Mocha



Hazelnut



Sage



Oatmeal W/
Chocolate Glaze



Colonial
White

Seal Gray / Designer White - newest bright white color option

Ask about other custom color options and features, such as Wormhole, Oversanded Edges or Wiped Glaze



Chestnut

The Charleston Chestnut

The Charleston in Chestnut Stain is a full Overlay door in solid wood with a 5 piece construction. It is our most popular door style solution. Its rich chestnut stain finish and chocolate glazing make it a dressy neutral for all traditional and eclectic tastes.

Value Features:

- ✓ Full Overlay Classic Miter
- ✓ Five piece Drawer Front
- ✓ Full extension and soft close under mount drawer glides included
- ✓ Assembled and Flat pack options
- ✓ Solid Wood raised Center Panel
- ✓ Dovetailed all wood drawer box
- ✓ Finished Ends – No Need to Order Skins
- ✓ Glazing included

*Matching ends, no skins required



Tapioca w/
Chocolate Glaze

The Charleston Tapioca with Chocolate Glaze

The Charleston in the incredibly popular Tapioca with Chocolate Glaze satisfies your homeowner's desire for a creamy finish with tailored glazing detail. It is also a full overlay style solution. It will work as a cottage style as well as high end formality depending on your trim and design selections.

Value Features:

- ✓ Full Overlay Classic Miter
- ✓ Five piece Drawer Front
- ✓ Full extension and soft close under mount drawer glides included
- ✓ Glazing included
- ✓ MDF Center Panel
- ✓ Dovetailed all wood drawer box
- ✓ Assembled and Flat pack options
- ✓ Finished Ends – No Need to Order Skins

*Natural ends, exposed ends require skins, see P38 & 39



Saddle

The Metro Saddle

For the minimalist customer, this shaker style door can be used traditionally as well as in very modern designs. Its' rich brown finish in not as dark as Espresso which leads to it having more of a universal appeal. This gorgeous door is also full overlay with solid wood construction and a 5 piece door.

Value Features:

- ✓ Full overlay with 2 ¾" rails
- ✓ Eased edge
- ✓ All wood dovetailed drawer box
- ✓ Any color paint upgrades available
- ✓ Assembled or flat pack
- ✓ Recessed MDF veneered flat center panel
- ✓ Slab drawer front
- ✓ Full extension and under mount cushion close included

*Natural ends, exposed ends require skins, see P38 & 39



Saddle

The Kennesaw Saddle

The traditional Simplicity in this handsome raised panel rich brown stained door will have mass appeal. Customers wanting the richness of the raised panel without the addition of the Charleston detail and glazing will be delighted to add this quality door to their homes. The frame is all wood with the benefit of an MDF center panel that eliminates shrinkage concerns. This door will deliver beauty and quality from start to finish for your discerning customers.

Value Features:

- ✓ Full overlay
- ✓ All wood with veneered MDF center
- ✓ Full extension and under mount cushion close included
- ✓ Assembled or Flat pack options
- ✓ Slab drawer front outside profile that matches door
- ✓ All wood dovetailed drawer box
- ✓ Any color paint upgrades available

*Natural ends, exposed ends require skins, see P38 & 39



Walnut

The Charleston Walnut

The newest addition to our classic Charleston line is Walnut with Chocolate Glaze. The warmth of the medium – dark stain is the perfect complement to mix with Charleston Tapioca, or it can boldly stand alone in kitchen, bath, home office, or basement bar settings.

Value Features:

- ✓ Full Overlay Classic Miter
- ✓ Full extension soft close under mount drawer glides included
- ✓ Solid Wood raised Center Panel
- ✓ Finished Ends – No Need to Order Skins
- ✓ No middle stile in 30", 33", 36" widths
- ✓ Five piece Drawer Front
- ✓ Built-in soft close hinges
- ✓ Assembled and Flat pack options
- ✓ Dovetailed all wood drawer box
- ✓ Glazing included



Colonial White

The Metro Colonial White

The timeless appeal of off-white cabinetry helps out new Metro Colonial White cabinet steal the show. Now available as an in-stock color, this version of the sought-after Metro door style has extra features such as 5-piece drawer headers and slow-close hinges.

Value Features:

- ✓ Full overlay with 2 3/4" rails
- ✓ Eased edge
- ✓ Built-in soft close hinges
- ✓ Assembled and Flat pack options
- ✓ Dovetailed all wood drawer box
- ✓ No middle stile in 30", 33", 36" widths
- ✓ Five piece Drawer Front
- ✓ Full extension soft close under mount drawer glides included
- ✓ Recessed MDF veneered flat center panel
- ✓ Finished Ends – No Need to Order Skins



Espresso

Value Series Manchester

Wall Cabinets:

- ✓ $\frac{5}{8}$ " furniture grade particle board box construction
- ✓ $\frac{5}{8}$ " Adjustable shelving, edge banded both sides
- ✓ Plastic Locking Shelf clips
- ✓ $\frac{1}{4}$ " Back with $\frac{5}{8}$ " furniture grade particle board box hanging rails
- ✓ Natural Maple color interiors

Hinges:

- ✓ 6 Way adjustable hinges

Wall Cabinets:

- ✓ $\frac{5}{8}$ " furniture grade particle board box construction
- ✓ $\frac{5}{8}$ " Adjustable shelving, edge banded both sides, half deep
- ✓ Plastic Locking Shelf clips
- ✓ $\frac{1}{4}$ " Back with $\frac{5}{8}$ " furniture grade particle board box hanging rails
- ✓ Natural Maple color interiors
- ✓ Matching finished exteriors

Drawer Construction:

- ✓ Drawer box sides made of furniture grade particle board box construction
- ✓ $\frac{1}{4}$ " Mdf bottom Natural Maple color
- ✓ Natural Maple color
- ✓ Side mounted epoxy coated drawer glides with adjustable boots
- ✓ Upgrade to wood drawer box and soft close undermount drawer guides. \$30 per drawer

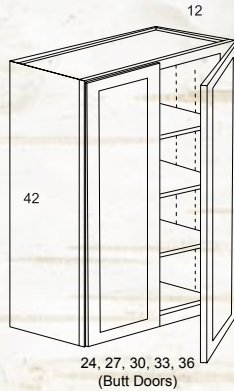
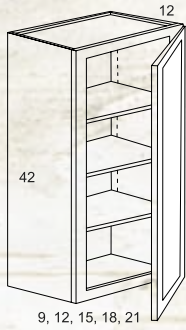
Description

PREMIER

STANDARD

VALUE

42" High Wall



W942

\$218

\$197

N/A

W1242

\$260

\$235

N/A

W1542

\$316

\$286

N/A

W1842

\$356

\$323

N/A

W2142

\$396

\$360

N/A

W2442

\$441

\$396

N/A

W2742

\$487

\$423

N/A

W3042

\$539

\$470

N/A

W3342

\$580

\$498

N/A

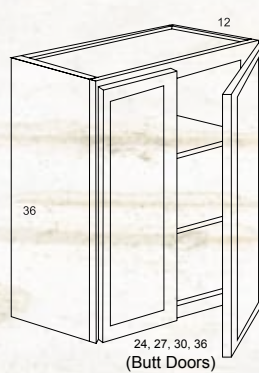
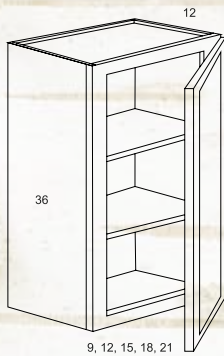
W3642

\$621

\$533

N/A

36" High Wall



W936

\$246

\$184

\$172

W1236

\$297

\$223

\$183

W1536

\$318

\$268

\$186

W1836

\$375

\$288

\$197

W2136

\$423

\$340

\$221

W2436

\$440

\$384

\$239

W2736

\$491

\$400

\$253

W3036

\$515

\$445

\$270

W3336

\$543

\$468

\$302

W3636

\$536

\$493

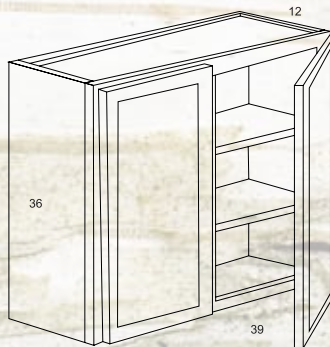
\$312

W3936

\$573

\$523

\$330



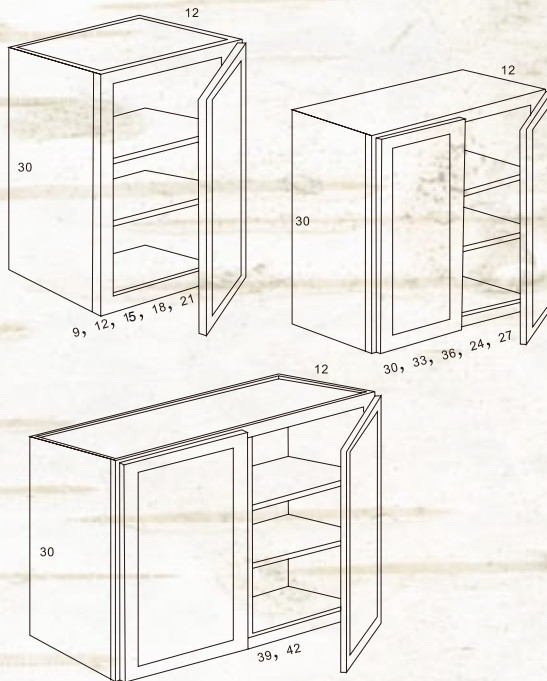
Description

PREMIER

STANDARD

VALUE

30" High Wall



W930

\$172

\$156

\$146

W1230

\$209

\$190

\$155

W1530

\$251

\$228

\$156

W1830

\$284

\$258

\$158

W2130

\$318

\$288

\$183

W2430

\$398

\$361

\$198

W2730

\$405

\$368

\$222

W3030

\$444

\$403

\$234

W3330

\$473

\$430

\$246

W3630

\$496

\$451

\$258

W3930

\$508

\$461

N/A

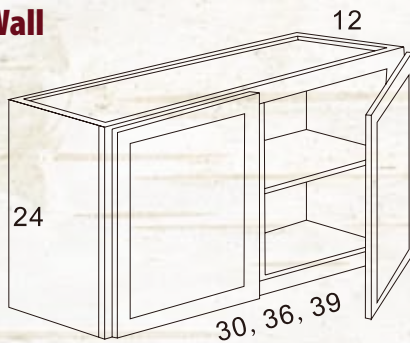
W4230

\$536

\$487

\$282

24" High Wall



W3024

\$327

\$295

\$204

W3624

\$403

\$367

\$224

W3924

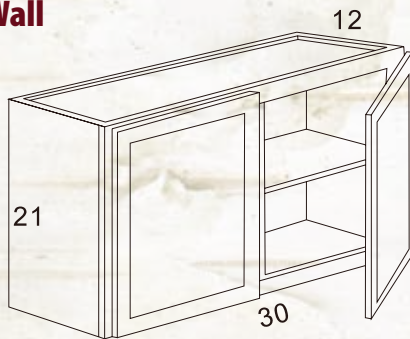
\$423

\$384

\$234

*30 and 36 no center stile

21" High Wall



W3021

\$316

\$286

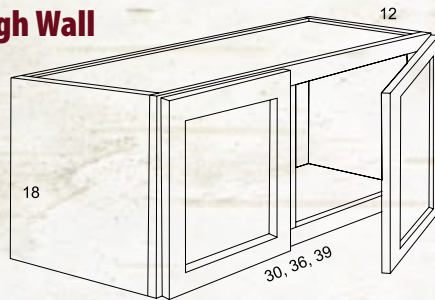
N/A

*no center stile

The pics in the specbook are for dimension purposes ONLY and do NOT represent the cabinet styles.

Description	PREMIER	STANDARD	VALUE
-------------	---------	----------	-------

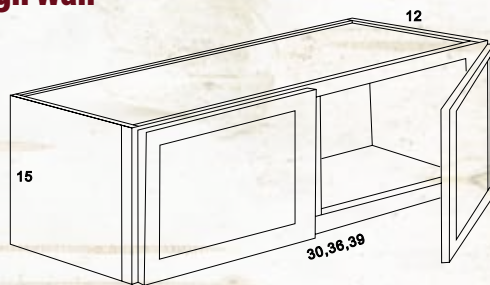
18" High Wall



W3018	\$279	\$253	\$174
W3618	\$339	\$307	\$191
W3918	\$342	\$311	N/A

*only W3018 has center stile

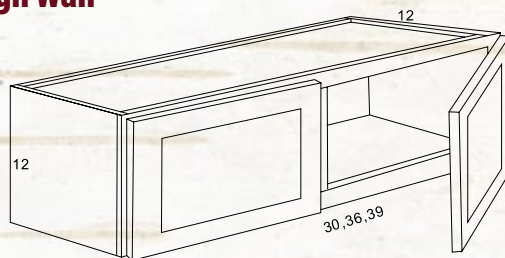
15" High Wall



W3015	\$244	\$221	\$169
W3315	N/A	N/A	\$183
W3615	\$305	\$277	N/A
W3915	\$328	\$298	N/A

*only W3915 has center stile

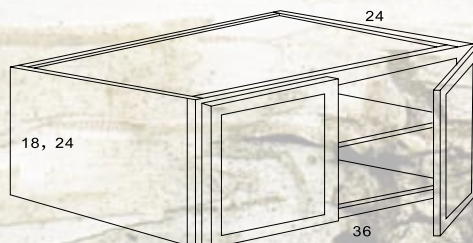
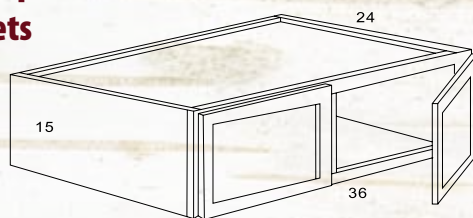
12" High Wall



W3012	\$209	\$190	\$172
W3612	\$288	\$261	\$193
W3912	\$319	\$290	\$211

*only W3912 center stile

24" Deep Wall Cabinets



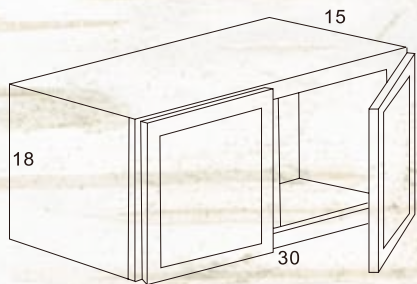
W361524	\$344	\$312	N/A
W361824	\$440	\$400	N/A
W362424	\$463	\$421	N/A

*no center stile

The pics in the specbook are for dimension purposes ONLY and do NOT represent the cabinet styles.

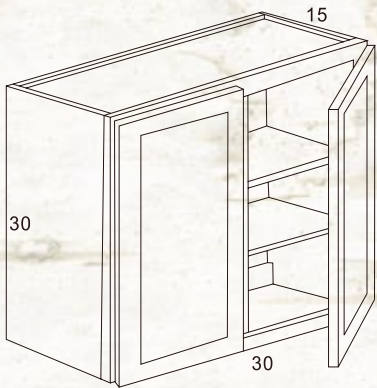
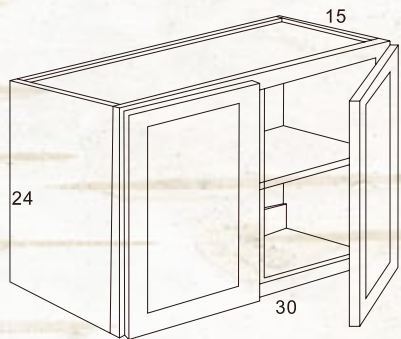
Description	PREMIER	STANDARD	VALUE
-------------	---------	----------	-------

15" Deep Wall Cabinets



W301815	\$319	\$290	N/A
W302415	\$363	\$330	N/A
W303015	\$482	\$438	N/A

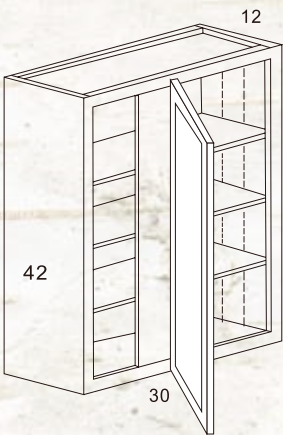
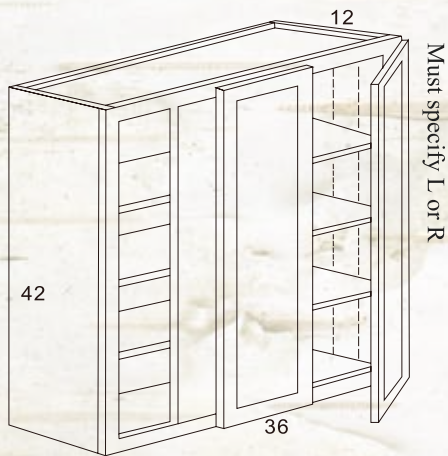
*no center stile



42" High Wall Cabinets

WBC3042	\$556	\$505	N/A
WBC3642	\$612	\$556	N/A

Specifications on Page 47



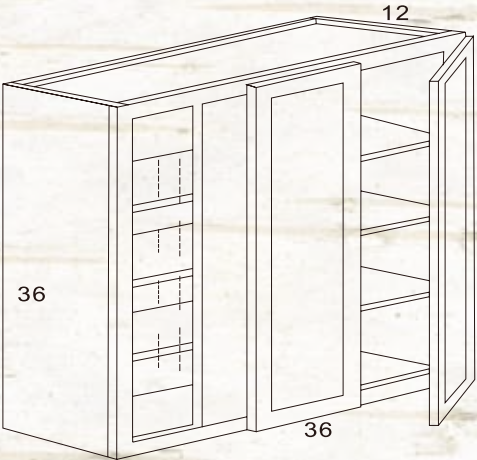
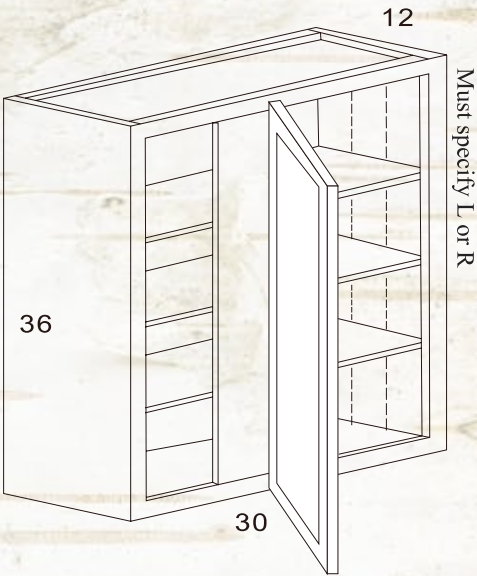
The pics in the specbook are for dimension purposes ONLY and do NOT represent the cabinet styles.

Description	PREMIER	STANDARD	VALUE
-------------	---------	----------	-------

36" High Wall Blind Corner

WBC3036	\$531	\$482	\$260
WBC3636	\$582	\$528	\$319

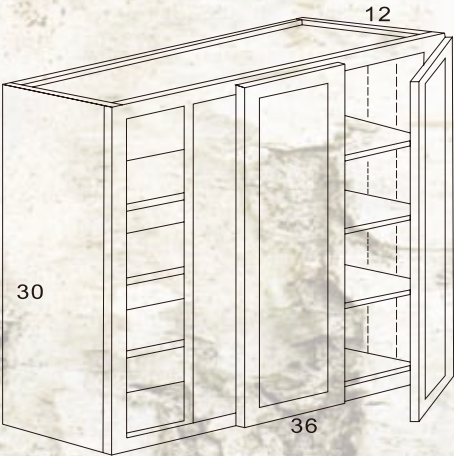
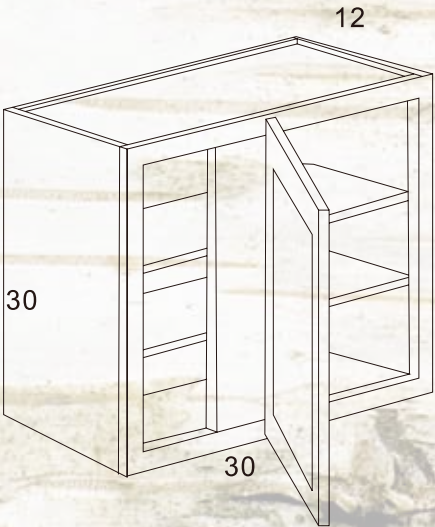
Specifications on Page 47



30" High Wall Blind Corner Cabinets

WBC3030	\$482	\$438	\$219
WBC3630	\$535	\$486	\$254

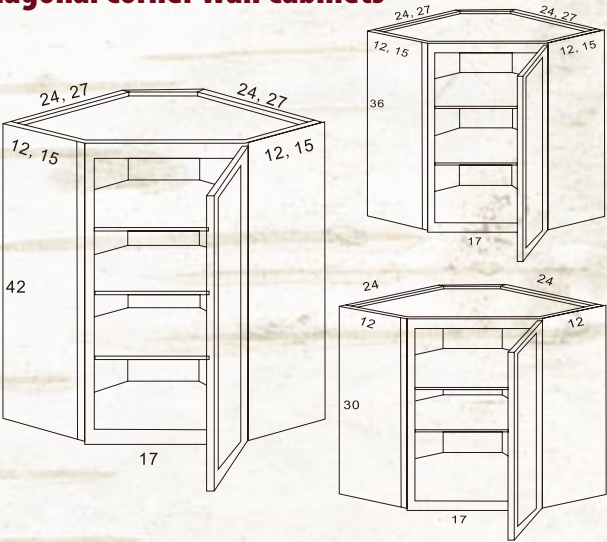
Specifications on Page 47



The pics in the specbook are for dimension purposes ONLY and do NOT represent the cabinet styles.

Description	PREMIER	STANDARD	VALUE
-------------	---------	----------	-------

Diagonal Corner Wall Cabinets



DCW2430	\$438	\$367	\$330
DCW2436	\$501	\$456	N/A
DCW2442	\$549	\$498	\$512
DCW273615	\$528	\$479	N/A
DCW274215	\$573	\$521	N/A

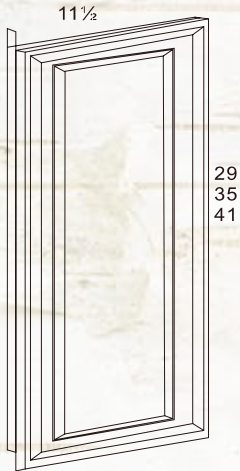
The pics in the specbook are for dimension purposes ONLY and do NOT represent the cabinet styles.

Description	PREMIER	STANDARD	VALUE
-------------	---------	----------	-------

Wall Decorative End Panels

WDEP30	\$184	\$167	N/A
WDEP36	\$204	\$184	N/A
WDEP42	\$230	\$209	N/A

*Requires the addition of a wall skin for each panel

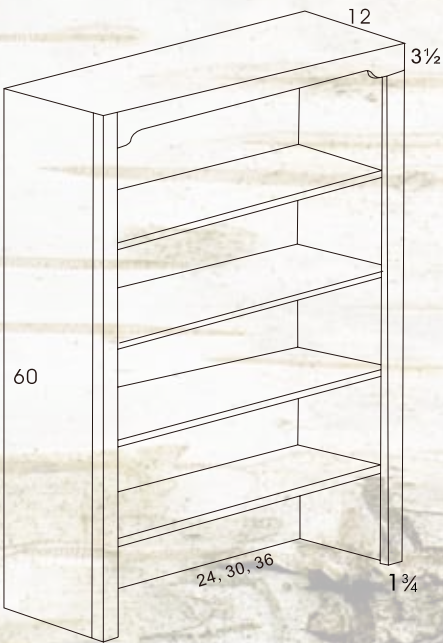


Bookcase Wall

BCW2460	\$857	\$778	N/A
BCW3060	\$934	\$848	N/A
BCW3660	\$1011	\$918	N/A

*Requires a 5 day lead time

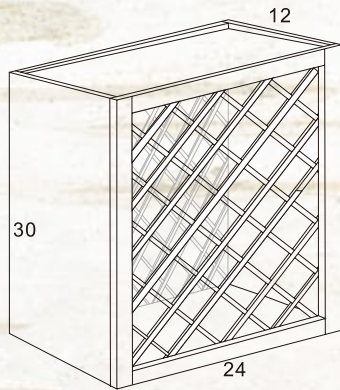
*Ask about custom sizes



The pics in the specbook are for dimension purposes ONLY and do NOT represent the cabinet styles.

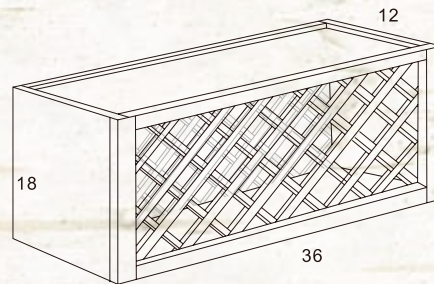
Description	PREMIER	STANDARD	VALUE
-------------	---------	----------	-------

Wine Rack Cabinets



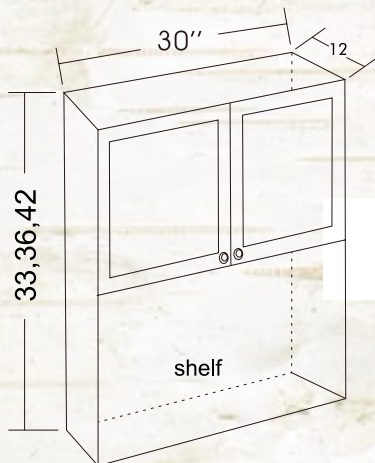
WRC1818*	\$675	\$614	N/A
WRC2430	\$675	\$614	N/A
WRC3618	\$675	\$614	N/A

*New large cross profile Wine Rack



Microwave Oven Cabinets

*Minimum 5 day lead time



Free standing microwaves only

M0303312	\$827	\$752	N/A
M0303612	\$932	\$847	N/A
M0304212	\$1088	\$988	N/A

*Open shelf microwave cabinet with 18" shelf, Cabinet 12" deep

*Comes with finished interior

Designed for built-in microwave units

M0303321	\$1108	\$1006	N/A
M0303621	\$1211	\$1100	N/A
M0304221	\$1367	\$1242	N/A

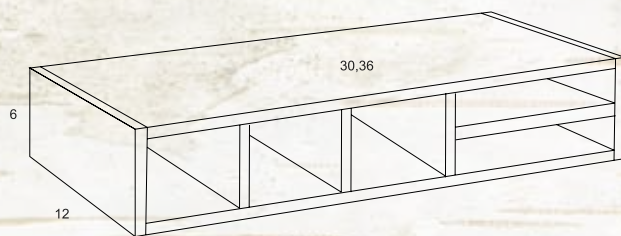
*21" deep

*All microwave cabinets are built with a 21" tall bottom unless otherwise specified

The pics in the specbook are for dimension purposes ONLY and do NOT represent the cabinet styles.

Description	PREMIER	STANDARD	VALUE
-------------	---------	----------	-------

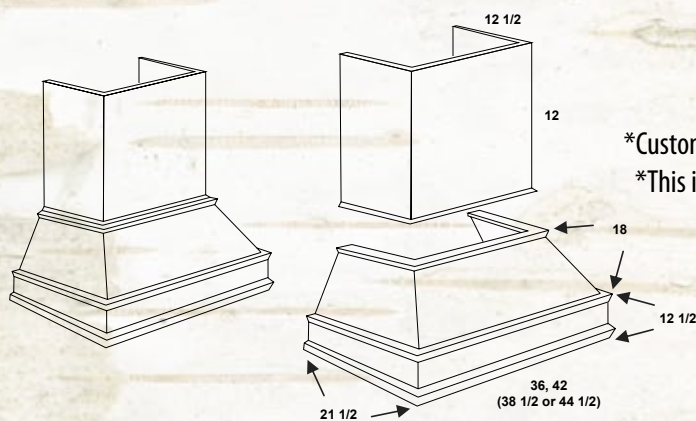
Desk Organizer



D030	\$491	\$491	N/A
D036	\$540	\$540	N/A

*This is a special order product that requires a 5 day lead time

Decorative Wood Hood



DWH30	\$3066	\$3066	N/A
DWH36	\$3241	\$3241	N/A
DWH42	\$3416	\$3416	N/A

*Customer unfinished hoods may be submitted for custom finishing

*This is a special order product that requires a 10-12 day lead time

*Visit www.fujioh.com for other custom hood options

*Does not come with blower or liner

Call for details

Glass Doors



RG	\$137	\$137	N/A
----	-------	-------	-----

*Glass not included

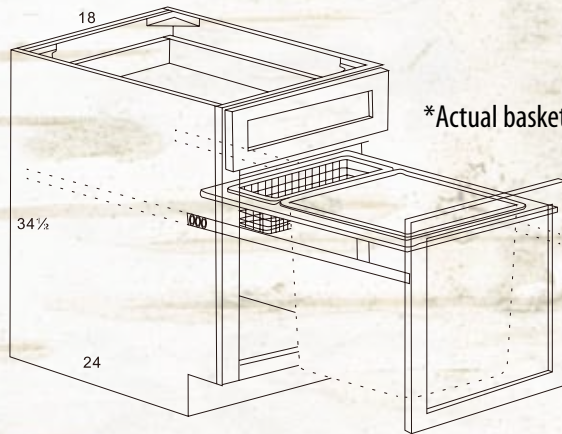
*Finished interior not included

*One charge per door, not per cabinet

The pics in the specbook are for dimension purposes ONLY and do NOT represent the cabinet styles.

Description	PREMIER	STANDARD	VALUE
-------------	---------	----------	-------

Base Wastebasket Cabinets



BWB18	\$705	\$631	N/A
-------	-------	-------	-----

*Actual basket design includes 2 wastebaskets and bottom side mount rails

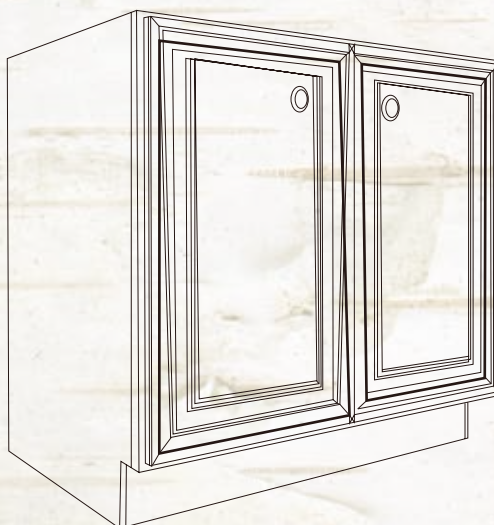
Base Decorative End Panel



BDEP	\$232	\$211	N/A
------	-------	-------	-----

*Requires the addition of a base skin for each panel installed

Full Height Door Bases



B12FHD	\$479	\$435	N/A
B15FHD	\$566	\$514	N/A
B18FHD	\$626	\$568	N/A
B21FHD	\$705	\$640	N/A
B24FHD	\$825	\$750	N/A
B27FHD	\$906	\$824	N/A
B30FHD	\$1016	\$924	N/A
B33FHD	\$1074	\$976	N/A
B36FHD	\$1169	\$1062	N/A
B39FHD	\$1230	\$1118	N/A
B42FHD	\$1311	\$1192	N/A

The pics in the specbook are for dimension purposes ONLY and do NOT represent the cabinet styles.

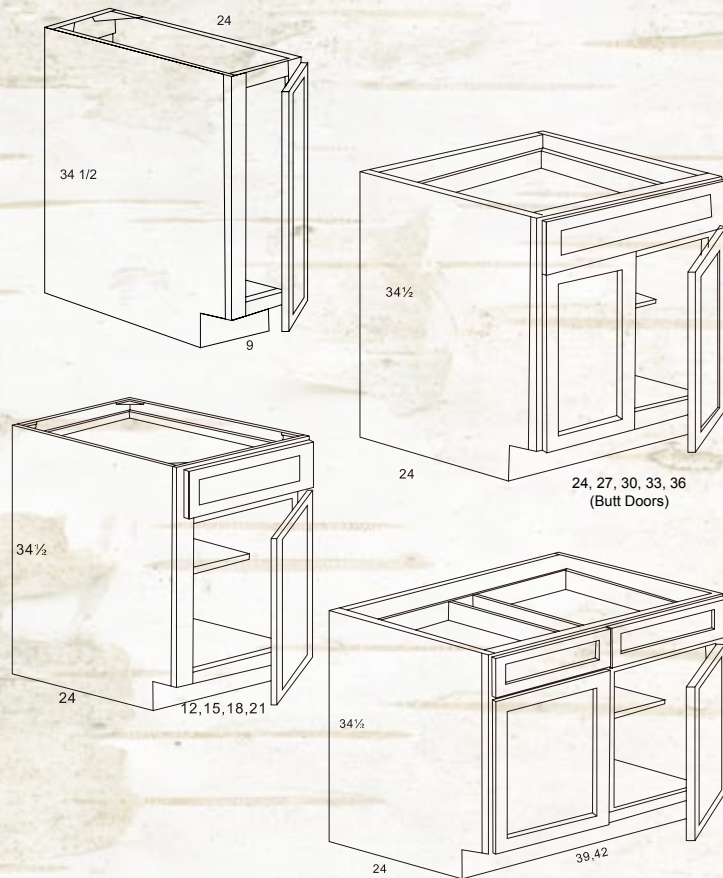
Description

PREMIER

STANDARD

VALUE

Base Cabinets



BT9

\$230

\$209

\$218

B12

\$308

\$285

\$221

B15

\$342

\$318

\$223

B18

\$381

\$356

\$225

B21

\$415

\$383

\$244

B24

\$466

\$424

\$263

B27

\$501

\$456

\$291

B30

\$573

\$521

\$330

B33

\$603

\$547

\$347

B36

\$671

\$610

\$363

B39

\$733

\$666

N/A

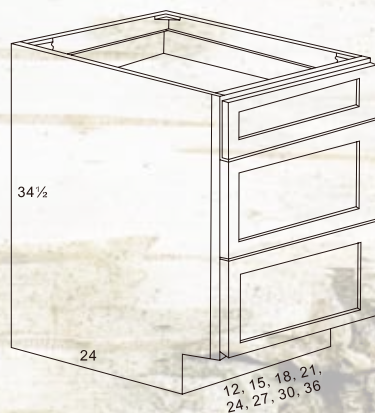
B42

\$775

\$703

\$396

Drawer Base Cabinets



3DB12

\$480

\$474

\$300

3DB15

\$529

\$520

\$307

3DB18

\$564

\$551

\$318

3DB21

\$604

\$588

\$339

3DB24

\$644

\$625

N/A

3DB27

\$690

\$665

N/A

3DB30

\$735

\$699

N/A

3DB36

\$815

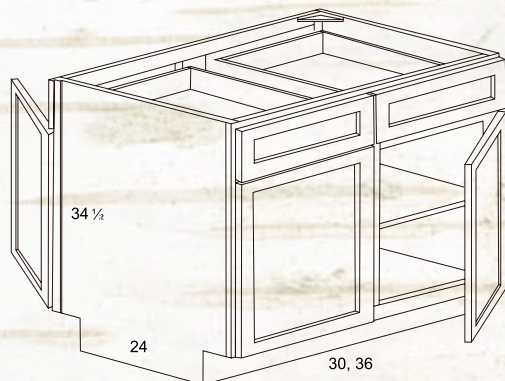
\$779

N/A

The pics in the specbook are for dimension purposes ONLY and do NOT represent the cabinet styles.

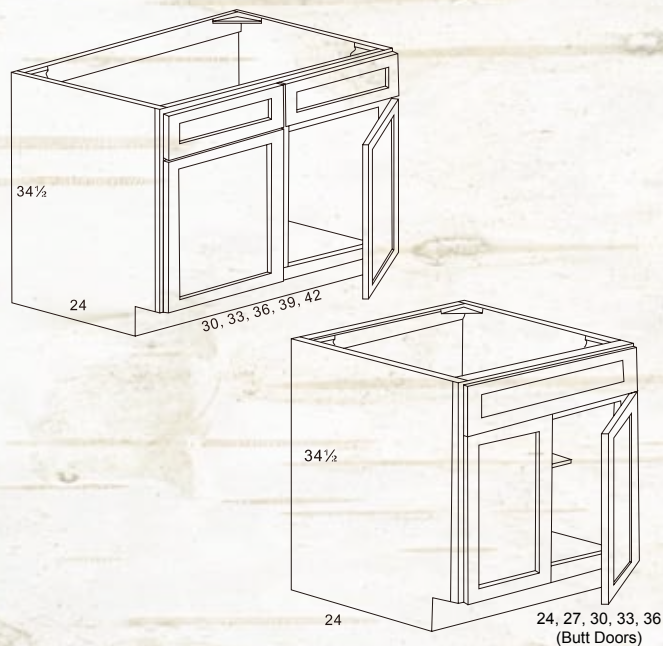
Description	PREMIER	STANDARD	VALUE
-------------	---------	----------	-------

Peninsula Base Cabinets



PB30	\$1099	\$1046	N/A
PB36	\$1225	\$1113	\$1113

Sink Base Cabinets



SB24	\$473	\$430	N/A
SB27	\$493	\$447	N/A
SB30	\$531	\$482	\$277
SB33	\$566	\$514	\$290
SB36	\$631	\$573	\$304
SB39	\$708	\$643	N/A
SB42	\$766	\$696	N/A

Sink Base Floor



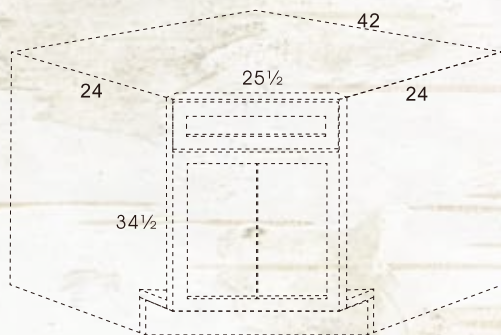
SBF4242	\$135	\$135	N/A
---------	-------	-------	-----

*For use with sink front

The pics in the specbook are for dimension purposes ONLY and do NOT represent the cabinet styles.

Description	PREMIER	STANDARD	VALUE
-------------	---------	----------	-------

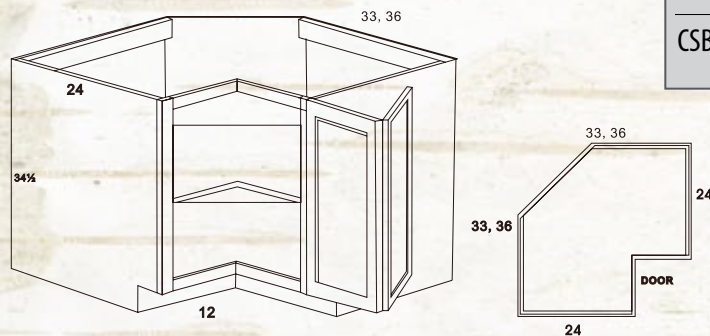
Diagonal Corner Sink Fronts



DCSF42	\$361	\$328	N/A
--------	-------	-------	-----

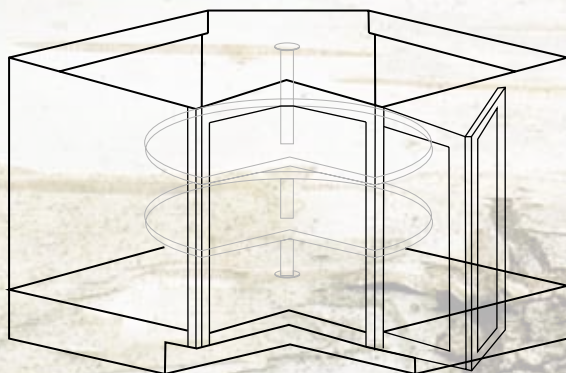
*This is a cabinet frame and door only, requires side cabinets for enclosure

Corner Sink Base Cabinets



CSB33 w/ shelf	\$747	\$692	N/A
CSB36 w/ shelf	\$834	\$757	\$580

Lazy Susan Base Cabinets



LSB33 w/ plastic shelf	\$1148	\$1043	N/A
LSB36 w/ plastic shelf	\$1220	\$1108	N/A
LSBW36 w/ wood shelf	\$1400	\$1325	\$720

*CSB33 will not accommodate wood rotating kit shelf

*Premier line will no longer have plastic shelves in the future.

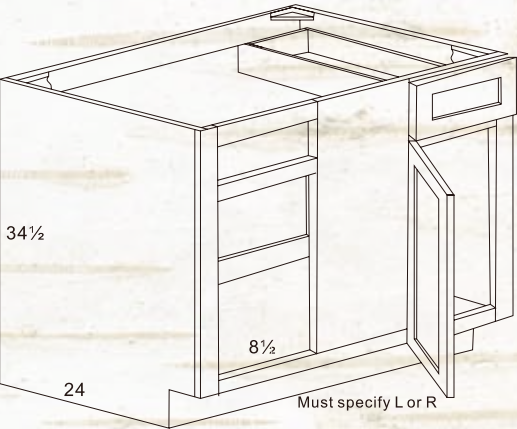
Moving towards wood only.

The pics in the specbook are for dimension purposes ONLY and do NOT represent the cabinet styles.

Description	PREMIER	STANDARD	VALUE
-------------	---------	----------	-------

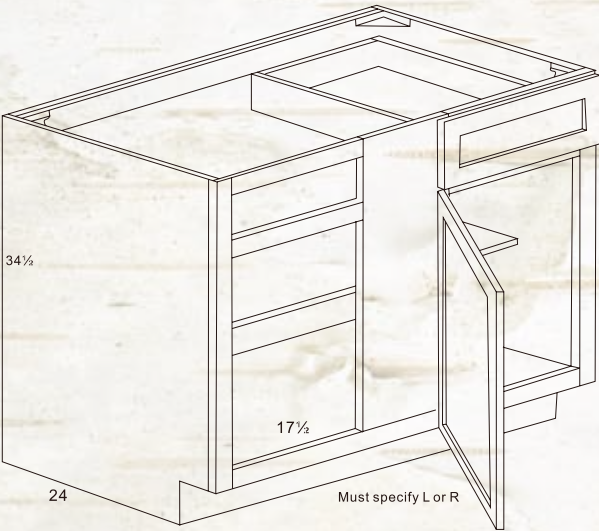
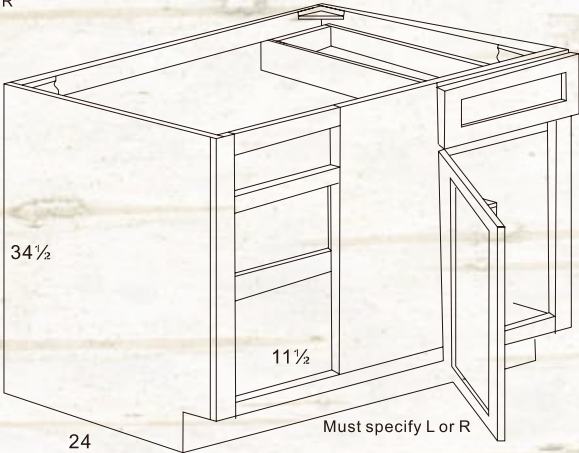
Base Blind Corner Cabinets

BBC36	\$572	\$520	\$297
BBC39	\$631	\$573	\$321
BBC42	\$666	\$605	\$326
BBC45	\$701	\$636	N/A



*All blinds must be pulled 2 1/2" to clear hardware
 *All blinds will need to be pulled to the maximum in order to clear appliances
 *Specifications on page 48-49

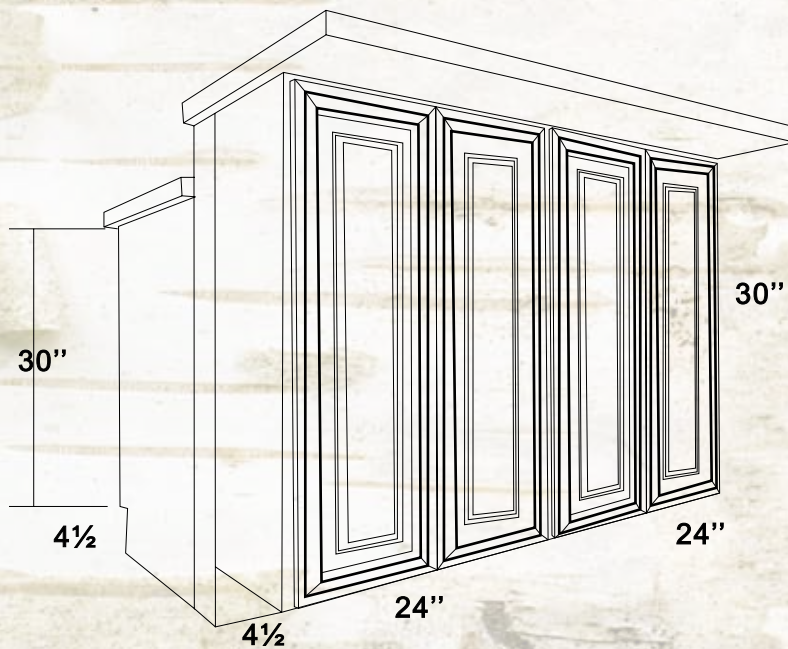
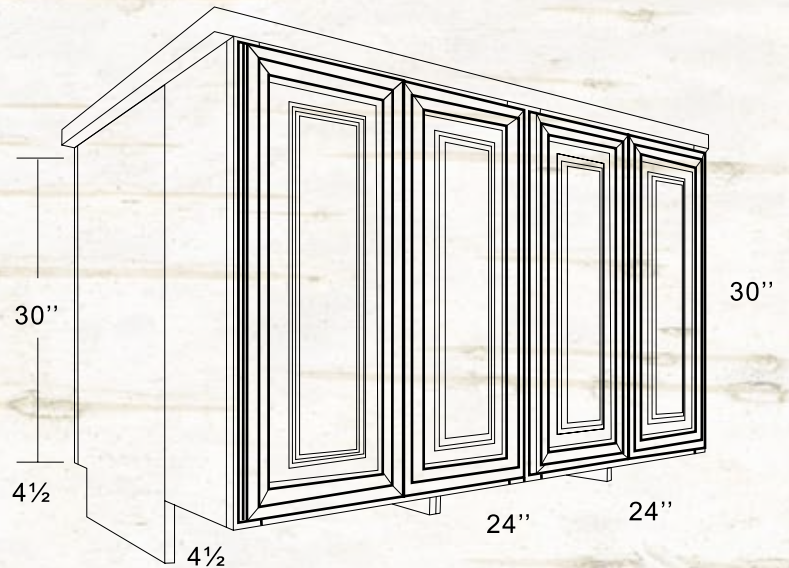
BBC36 – B12 Doors
 BBC39 – B15 Doors
 BBC42 – B18 Doors
 BBC45 – B21 Doors



The pics in the specbook are for dimension purposes ONLY and do NOT represent the cabinet styles.

Island Ideas

Extend countertop and add storage:
Add 30" high wall cabinets* to the back of island base cabinets



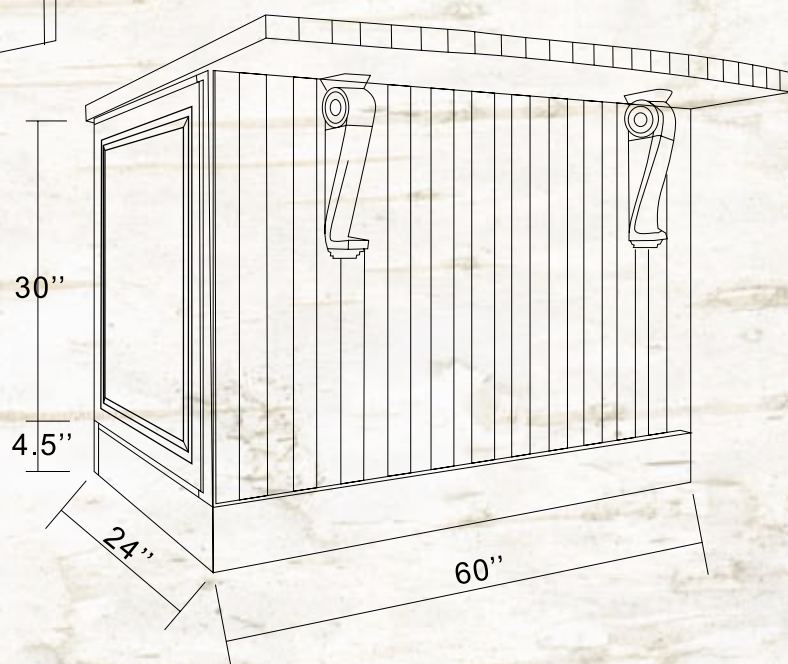
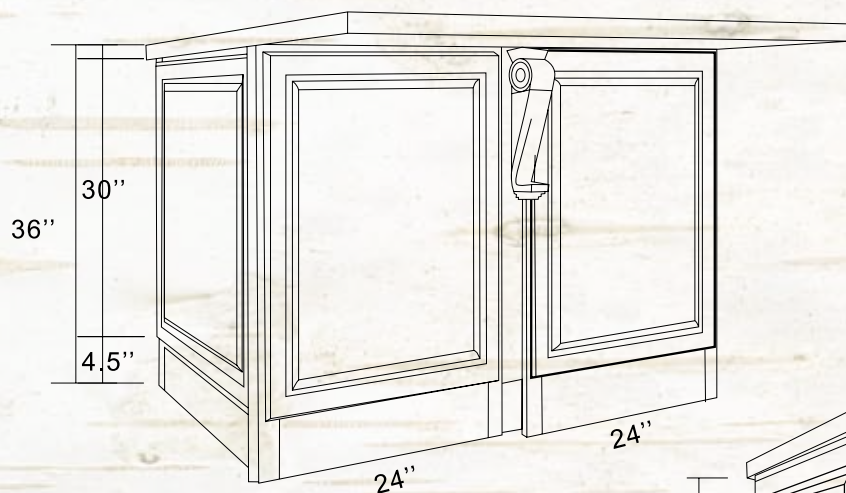
Raise countertop and add storage:
Add 36" high wall cabinets* to the back of island base cabinets or an added knee wall

*Always built by installer on a 4 1/2 platform to match toekick

The pics in the specbook are for dimension purposes ONLY and do NOT represent the cabinet styles.

Panel the back of your island:

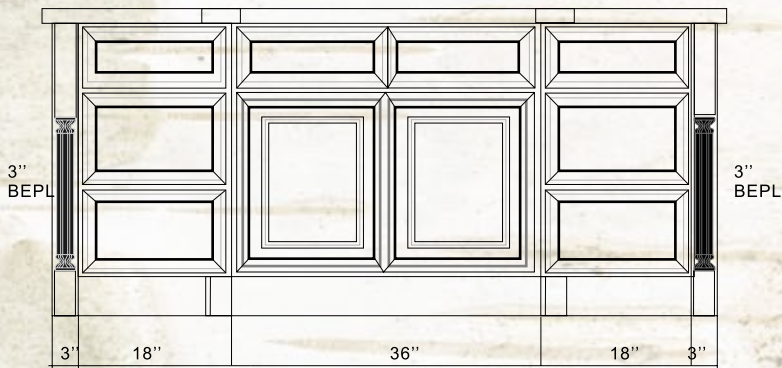
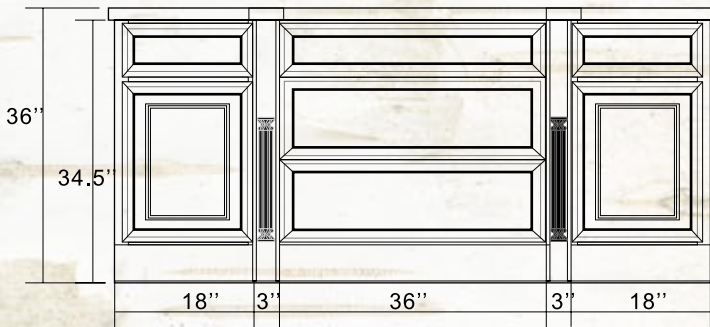
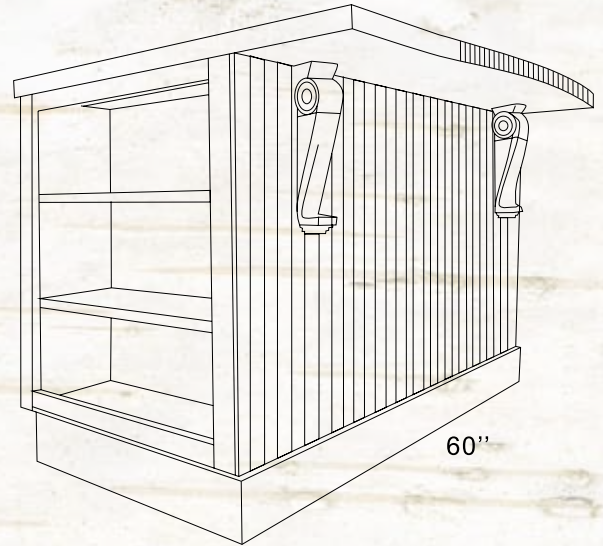
- ✓ Use Furniture base molding (FBM) instead of toe kick for a distinctive finish
- ✓ Apply base decorative end panels (BDEP) for a wrap around finish
- ✓ Specify a simple veneer with outside corner molding
- ✓ Specify a bead board veneer with outside corner molding
- ✓ Specify a simple veneer and use 3" fillers to mimic a shaker door style



The pics in the specbook are for dimension purposes ONLY and do NOT represent the cabinet styles.

Create an open bookshelf:

Use a wall 24" by 30" cabinet backed up to the side,
Specify finished interior or use a sheet of finished bead
board veneer as a liner.



Access the island cabinets from front and back:

Specify base and/or wall peninsula cabinets. For wall
peninsula with glass the interior will be finished to match
the exterior

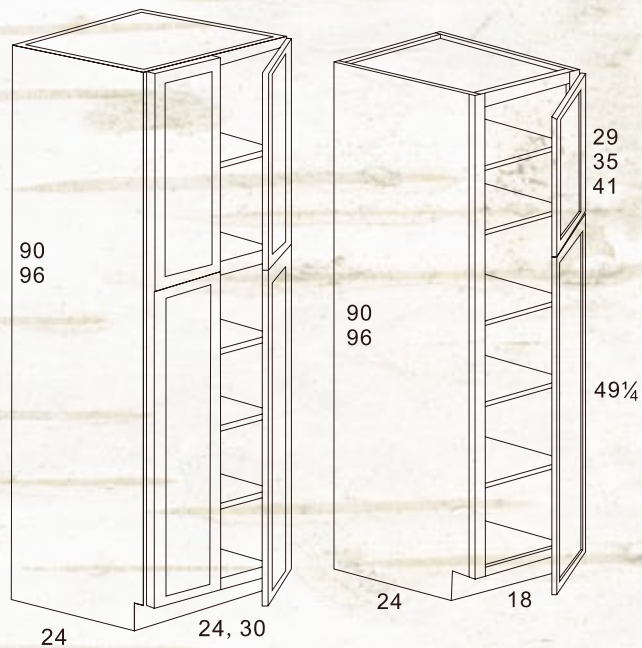
Decorate your island:

Specify decorative legs on either side of a center or at ends of your island
Use 3" material behind your leg to connect to cabinets
Use decorative corbels with a countertop overhang

The pics in the specbook are for dimension purposes ONLY and do NOT represent the cabinet styles.

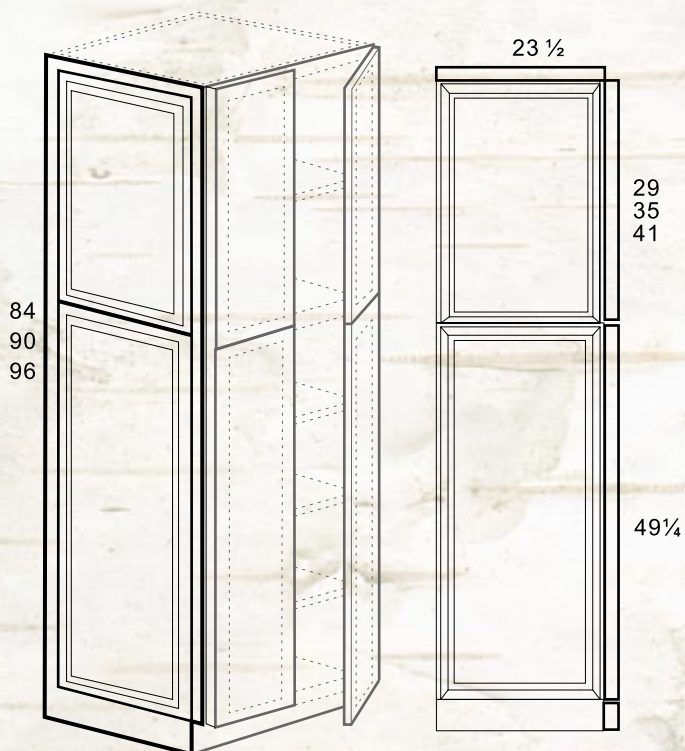
Description	PREMIER	STANDARD	VALUE
-------------	---------	----------	-------

Utility Cabinets



U188424	N/A	N/A	\$840
U248424	N/A	N/A	\$980
U189024	\$1283	\$1165	N/A
U249024	\$1309	\$1199	N/A
U309024	\$1319	\$1278	N/A
U189624	\$1346	\$1190	N/A
U249624	\$1475	\$1223	N/A
U309624	\$1514	\$1375	N/A

Tall Decorative End Panels



TDEP2484	\$473	\$430	N/A
TDEP2490	\$500	\$454	N/A
TDEP2496	\$531	\$482	N/A

*Requires the addition of a utility skin for each panel

The pics in the specbook are for dimension purposes ONLY and do NOT represent the cabinet styles.

Description	PREMIER	STANDARD	VALUE
-------------	---------	----------	-------

Oven Cabinets



0338424	\$1274	\$1204	N/A
0339024	\$1372	\$1309	\$1309
0339624	\$1445	\$1389	\$1389

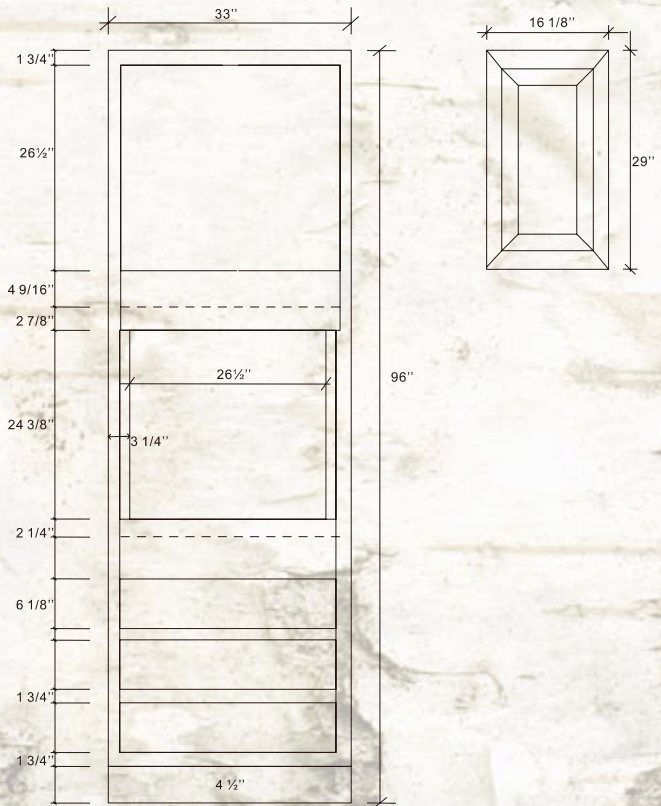
Single Oven Door Sizes

96" – 29" Doors

90" – 23" Doors

84" – 17" Doors

Oven Specifications



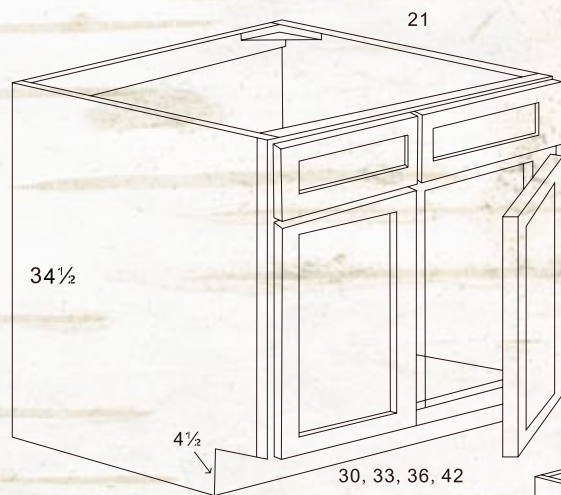
Can be field modified for Double Oven by removing applicable drawer boxes

Order F696 for modification

The pics in the specbook are for dimension purposes ONLY and do NOT represent the cabinet styles.

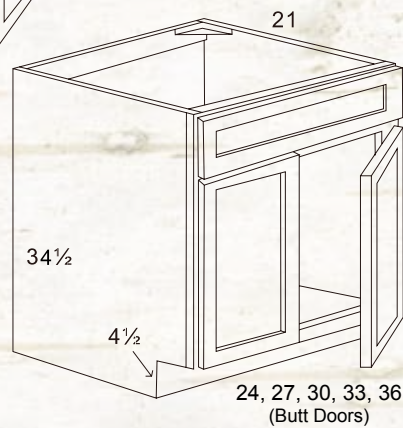
Description	PREMIER	STANDARD	VALUE
-------------	---------	----------	-------

Vanity Sink Cabinets

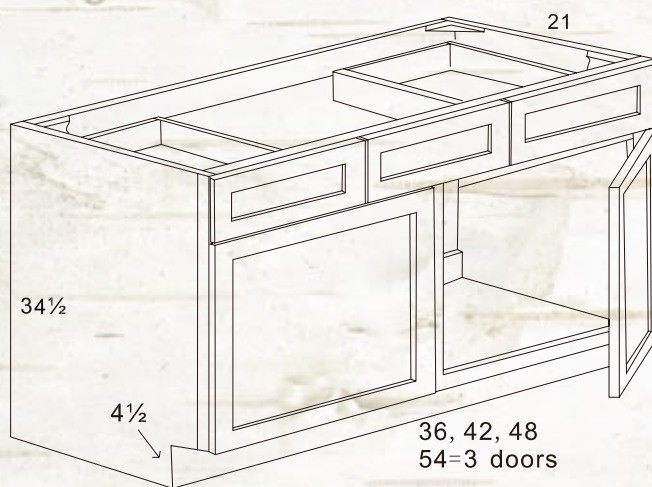


VS21	\$507	\$459	N/A
VS24	\$400	\$363	\$249
VS27	\$473	\$430	N/A
VS30	\$545	\$494	\$256
VS33	\$573	\$521	N/A
VS36	\$643	\$584	\$281

*N/A Manchester sizes obtainable through its base equivalent and DD



Vanity Sink Drawer Cabinets

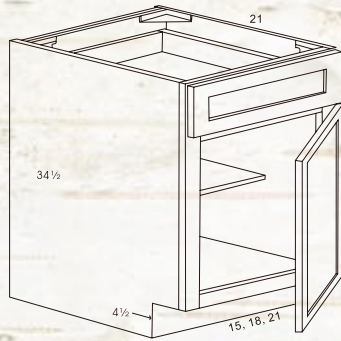


VSD36	\$663	\$601	\$352
VSD42	\$764	\$694	\$381
VSD48	\$859	\$780	\$409
VSD54	\$897	\$815	N/A

*VSD36 does not have center stile

The pics in the specbook are for dimension purposes ONLY and do NOT represent the cabinet styles.

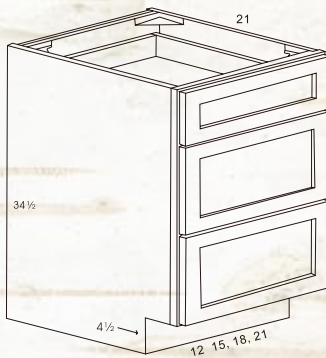
Vanity Base Cabinets



Description	PREMIER	STANDARD	VALUE
-------------	---------	----------	-------

VB15	\$318	\$295	N/A
VB18	\$353	\$323	N/A
VB21	\$401	\$352	N/A

Vanity Drawer Base Cabinets



3VDB12	\$458	\$438	\$297
3VDB15	\$489	\$481	\$304
3VDB18	\$530	\$512	\$314
3VDB21	\$579	\$556	N/A
3VDB24	\$621	\$602	N/A

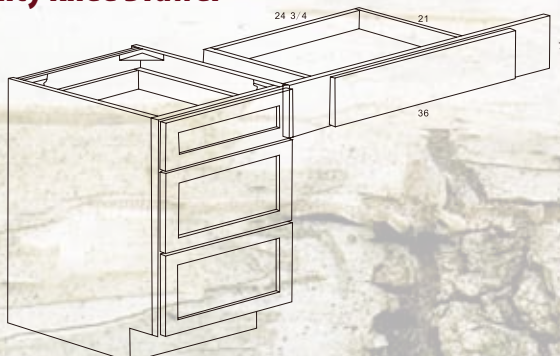
Vanity Decorative End Panel



VDEP	\$190	\$172	N/A
------	-------	-------	-----

*Requires the addition of a base skin for each panel

Vanity Knee Drawer



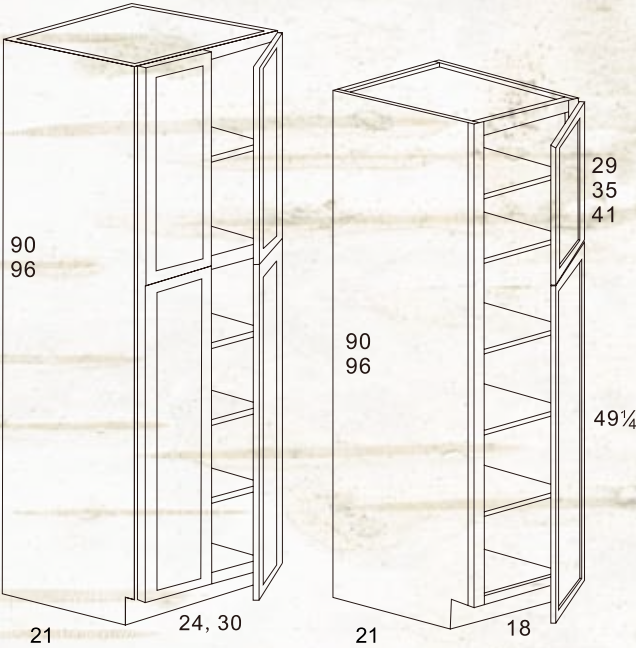
VKD36	\$193	\$176	\$167
-------	-------	-------	-------

*Trimable to 24 3/4"

The pics in the specbook are for dimension purposes ONLY and do NOT represent the cabinet styles.

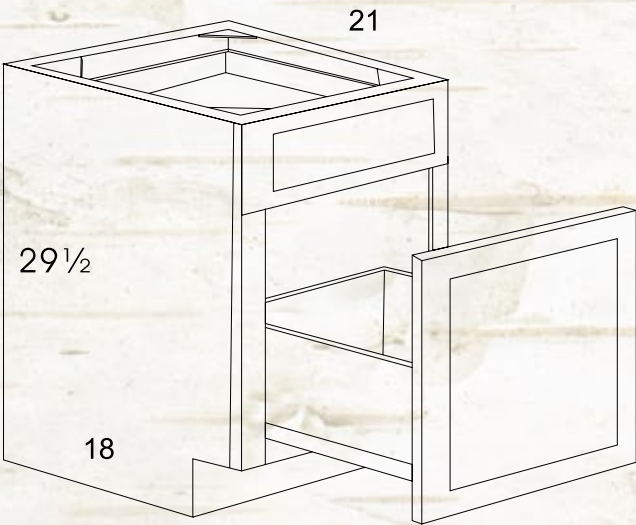
Description	PREMIER	STANDARD	VALUE
-------------	---------	----------	-------

Linen Towers



LT189021	\$1400	\$1272	N/A
LT249021	\$1531	\$1302	N/A
LT309021	\$1542	\$1444	N/A
LT189621	\$1570	\$1391	N/A
LT249621	\$1700	\$1426	N/A
LT309621	\$1738	\$1579	N/A

Office Suite Collection

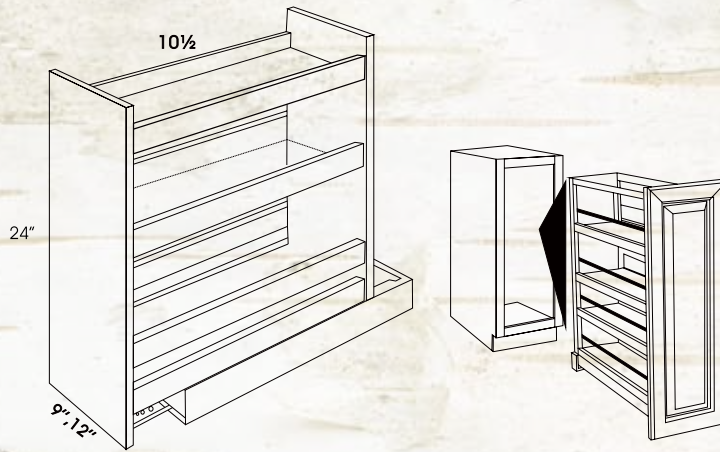


DFD18	\$426	\$411	N/A
-------	-------	-------	-----

The pics in the specbook are for dimension purposes ONLY and do NOT represent the cabinet styles.

Description	PREMIER	STANDARD	VALUE
-------------	---------	----------	-------

Wall Cabinet Pullouts



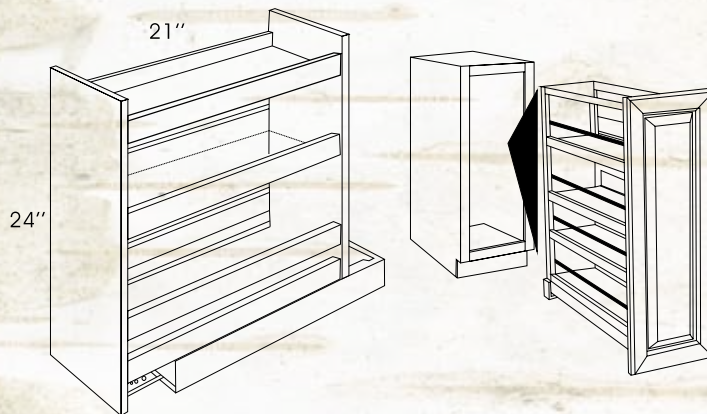
WP0930	\$517	\$470	N/A
WP01230	\$598	\$543	N/A
WP0936	\$549	\$498	N/A
WP01236	\$635	\$577	N/A
WP0942	\$563	\$510	N/A
WP01242	\$649	\$589	N/A

*All pullout racks are 24" tall

*Price includes cabinet wall 9" or 12"

*Installed in assembled cabinets only

Base Cabinet Pullouts

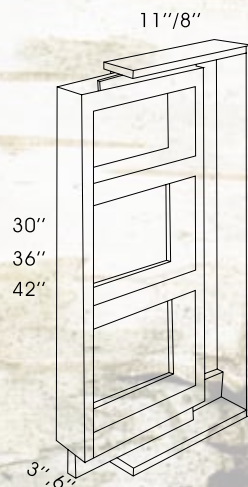


BP09	\$783	\$712	N/A
BTP09	\$783	\$712	N/A
BP012	\$936	\$850	N/A
BP015	\$1241	\$1241	N/A

*Price includes cabinet

*FHD base 9", 12" or 15"

Wall Filler Pullouts



WFP0330	\$275	\$275	N/A
WFP0336	\$291	\$291	N/A
WFP0342	\$326	\$326	N/A
WFP0630	\$347	\$347	N/A
WFP0636	\$365	\$365	N/A
WFP0642	\$393	\$393	N/A

*Filler not included

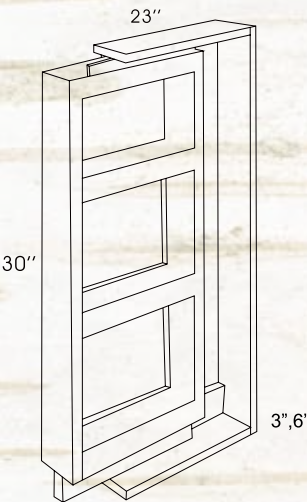
*Filler pullouts go between 2 cabinets the same way fillers are used

The pics in the specbook are for dimension purposes ONLY and do NOT represent the cabinet styles.

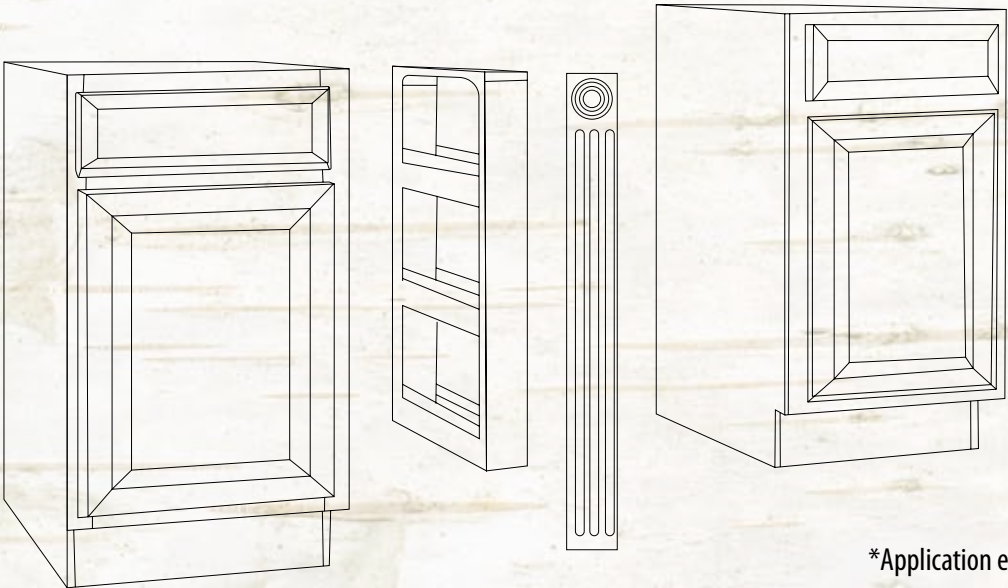
Description	PREMIER	STANDARD	VALUE
-------------	---------	----------	-------

Base Filler Pullouts

BFP03	\$332	\$332	N/A
BFP06	\$421	\$421	N/A



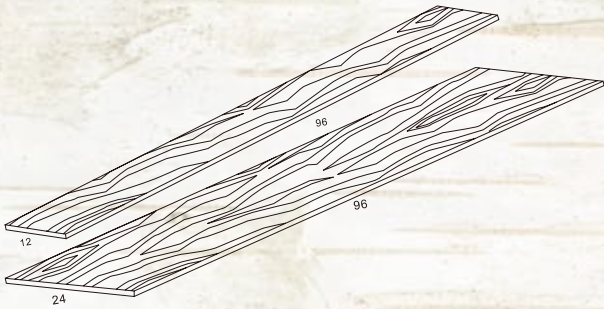
*Filler pullouts go between two cabinets, the same way filler panels are used
 *Filler not included



The pics in the specbook are for dimension purposes ONLY and do NOT represent the cabinet styles.

Description	PREMIER	STANDARD	VALUE
-------------	---------	----------	-------

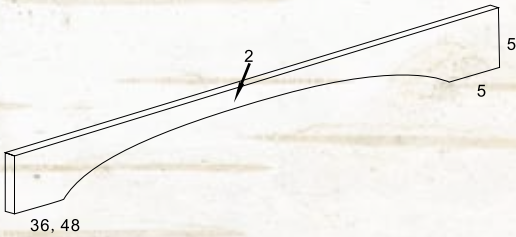
Shelving



S1296	\$115	\$115	\$163
S2496	\$222	\$222	\$316

*3/4" thick and edge banded on one long side

Valances Arched



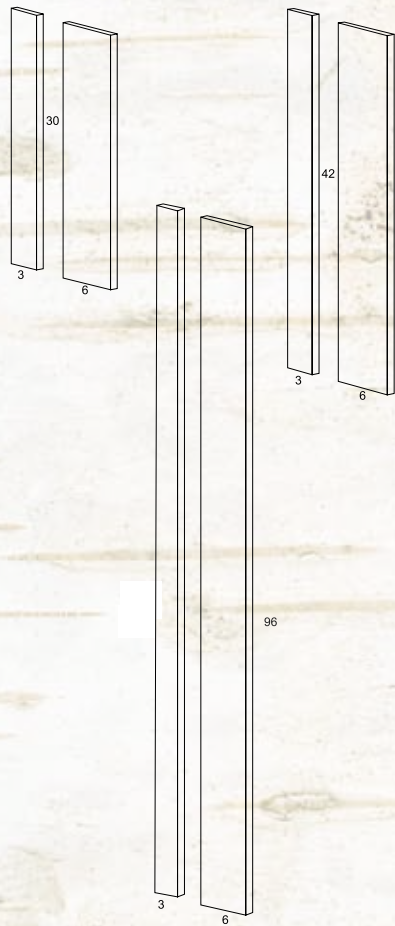
VA36	\$85	\$85	\$141
VA48	\$95	\$95	\$158

*For straight valances use fillers or shelving

The pics in the specbook are for dimension purposes ONLY and do NOT represent the cabinet styles.

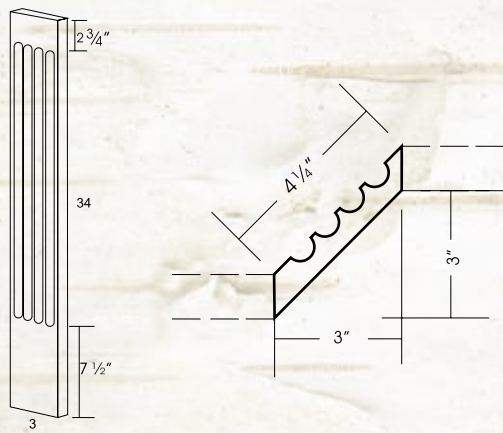
Description	PREMIER	STANDARD	VALUE
-------------	---------	----------	-------

Filler



F330	\$31	\$31	\$16
F342	\$45	\$45	\$22
F396	\$85	\$85	\$63
F630	\$57	\$57	\$27
F642	\$74	\$74	\$39
F696	\$169	\$169	N/A

Base Angled Fluted Fillers



BAFFL	\$61	\$61	N/A
BAFFR	\$61	\$61	N/A

The pics in the specbook are for dimension purposes ONLY and do NOT represent the cabinet styles.

Description	PREMIER	STANDARD	VALUE
-------------	---------	----------	-------

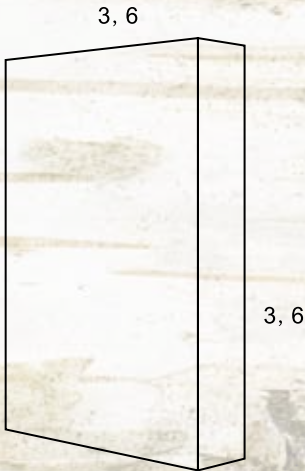
Fluted Fillers



FF396	\$197	\$197	N/A
FF696	\$309	\$309	N/A

*Can be trimmed
*See optional design blocks below

Filler Blocks



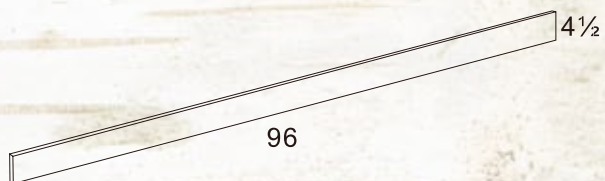
BLK33	\$8	\$8	N/A
BLK36	\$9	\$9	N/A
BLK63	\$15	\$15	N/A
BLK66	\$18	\$18	N/A

*For cap and base with fluted filler

The pics in the specbook are for dimension purposes ONLY and do NOT represent the cabinet styles.

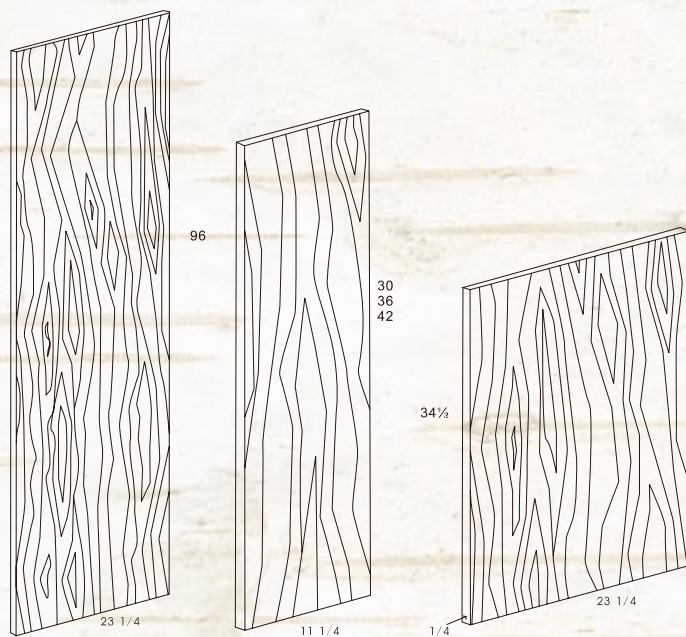
Description	PREMIER	STANDARD	VALUE
-------------	---------	----------	-------

Toekick Cover



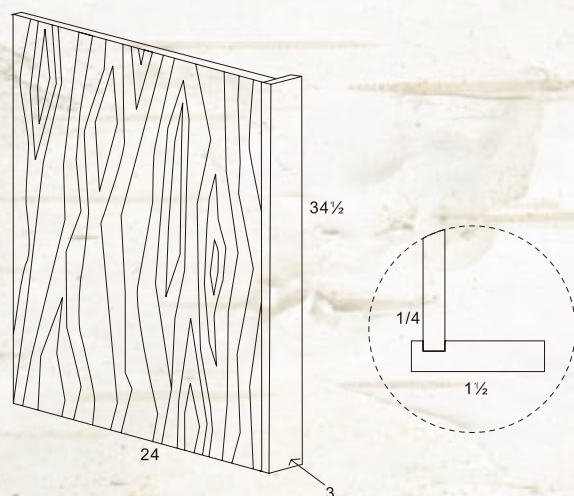
TKC	\$19	\$19	\$31
-----	------	------	------

Skins



BSV	\$32	\$32	N/A
WSV30	\$17	\$17	N/A
WSV36	\$21	\$21	N/A
WSV42	\$23	\$23	N/A
USV2496	\$92	\$92	N/A

Base End Panel Veneer

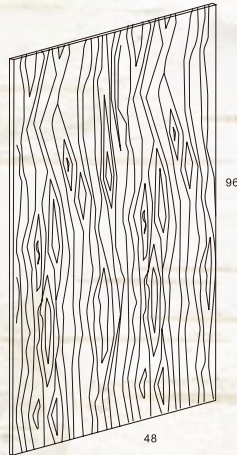


BEPV	\$60	\$60	N/A
BEPV1.5	\$72	\$72	N/A
BEPV3	\$79	\$79	\$63
BEPV6	N/A	N/A	\$53

The pics in the specbook are for dimension purposes ONLY and do NOT represent the cabinet styles.

Description	PREMIER	STANDARD	VALUE
-------------	---------	----------	-------

Finish Panel Veneer 1/4"



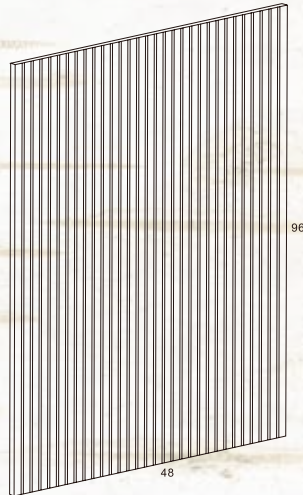
FPV4848	\$96	\$96	N/A
FPV4896	\$219	\$219	N/A

FPV4896NA*	\$176	\$176	N/A
PLY4896NA**	\$211	\$211	N/A

*UV Clear Coated 1/4" Plywood

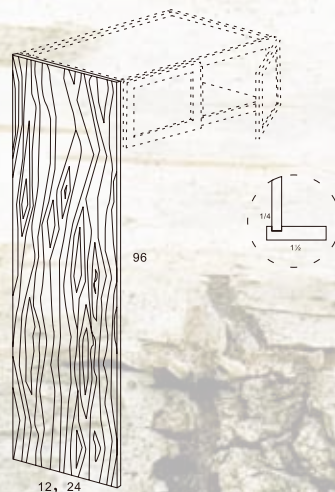
**UV Clear Coated 1/2" Plywood

Bead Board Finish Panel Veneer 1/4"



BBFPV4848	\$156	\$156	N/A
BBFPV4896	\$277	\$277	N/A

Refrigerator End Panel Veneer



REPV2496	\$188	\$188	N/A
REPV2796	\$246	\$246	N/A
REPV3096	\$275	\$275	N/A

*Use shelving and filler

The pics in the specbook are for dimension purposes ONLY and do NOT represent the cabinet styles.

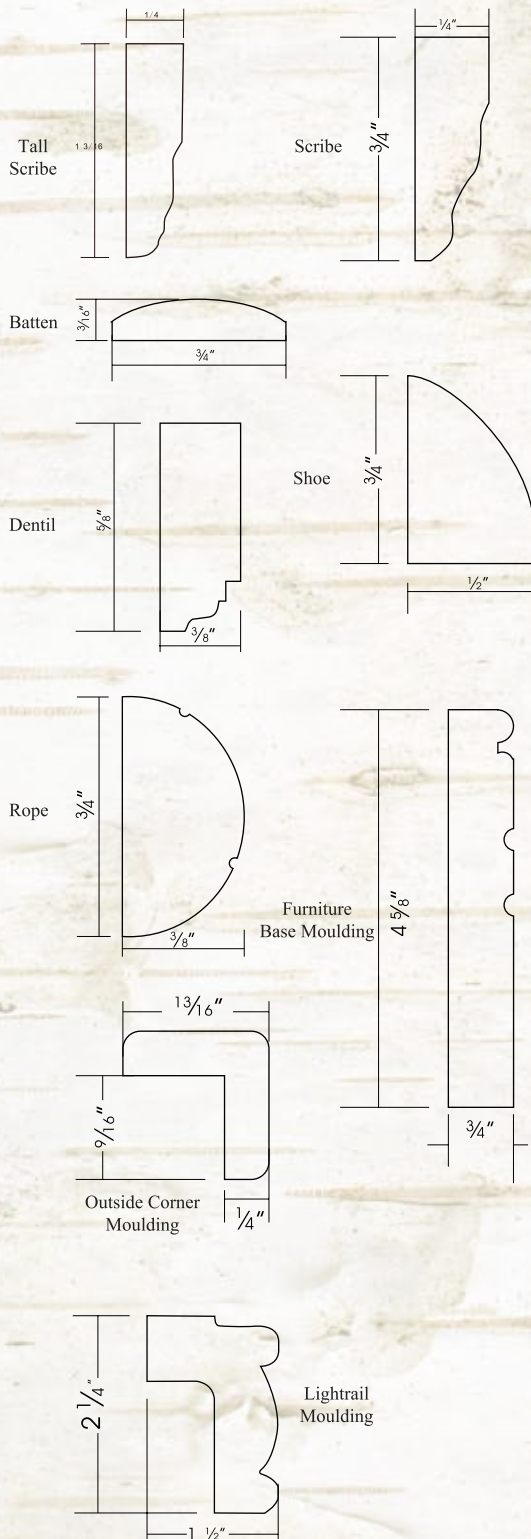
Description

PREMIER

STANDARD

VALUE

Wood Mouldings



SCR (Scribe)

\$18

\$18

\$13

SCRW (Tall Scribe)

\$26

\$26

N/A

BAM (Batten)

\$15

\$15

\$25

SHOE

\$24

\$24

\$39

DNTL (Dentil)

\$24

\$24

N/A

ROPE

\$17

\$17

N/A

FBM (Base)

\$167

\$167

N/A

OCM (Corner)

\$57

\$57

\$38

LRM (Light Rail)

\$165

\$165

N/A

CLRM
(New Small Profile
Light Rail)

\$165

\$165

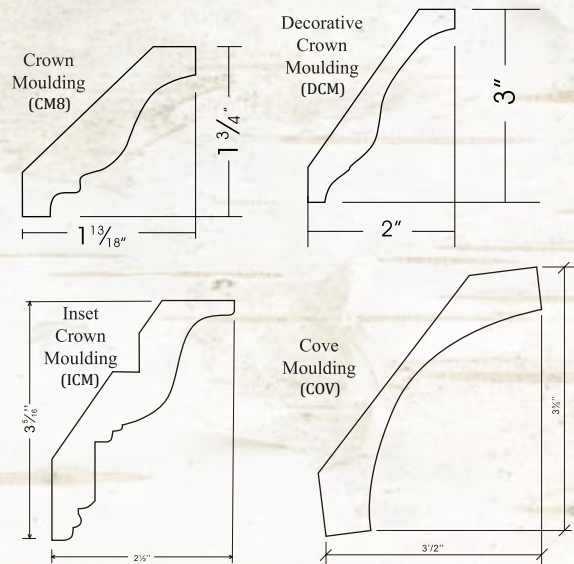
N/A

*All mouldings are 96" long

The pics in the specbook are for dimension purposes ONLY and do NOT represent the cabinet styles.

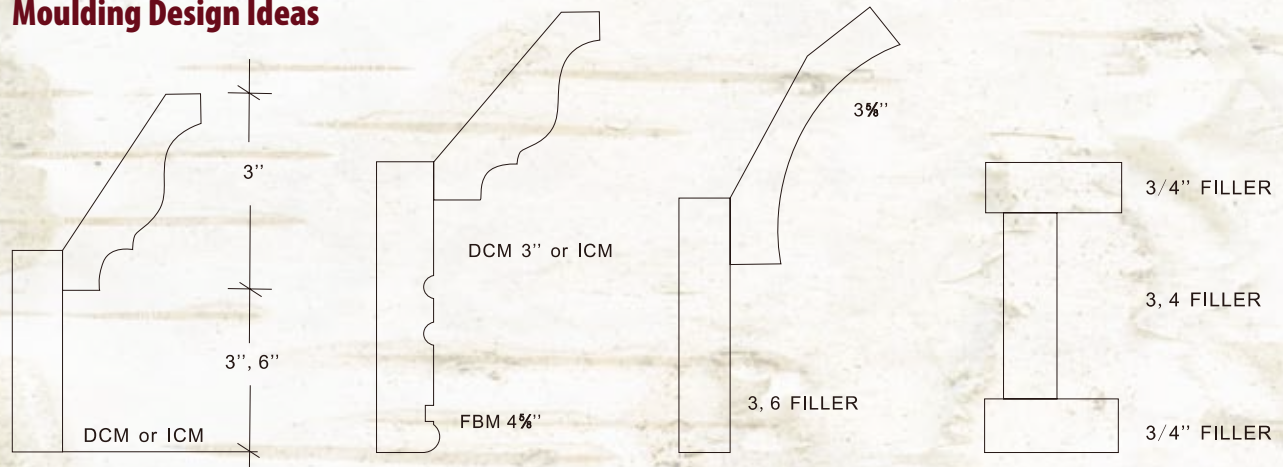
Description	PREMIER	STANDARD	VALUE
-------------	---------	----------	-------

Wood Mouldings

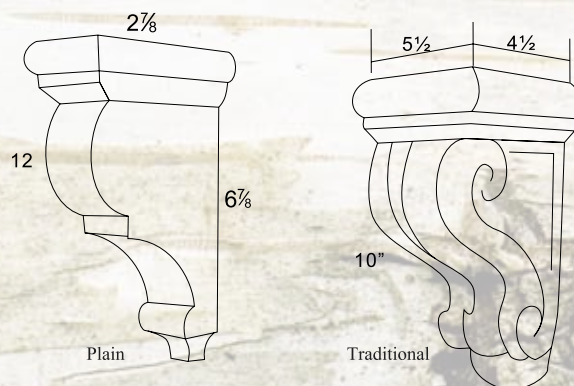


CM8	\$109	\$109	\$97
DCM	\$155	\$155	\$106
ICM	\$165	\$165	N/A
COV	\$185	\$185	N/A

Moulding Design Ideas



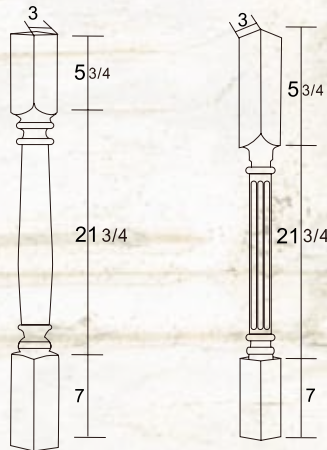
Corbels



CBP (Plain)	\$162	\$162	N/A
CBT (Traditional)	\$235	\$235	N/A
BAK (Brackets)	N/A	N/A	\$155 Expresso Only

The pics in the specbook are for dimension purposes ONLY and do NOT represent the cabinet styles.

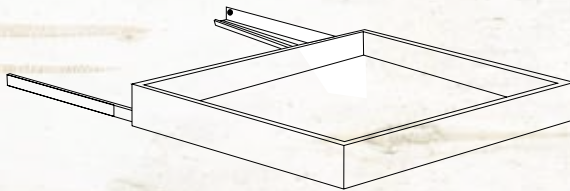
Decorative Legs



Description	PREMIER	STANDARD	VALUE
-------------	---------	----------	-------

CLDL (Classic)	\$95	\$95	N/A
FLDL (Fluted)	\$125	\$125	N/A

Base Rollout Shelves



- *Shelves are full extension
- *RS is for base cabinet use
- *URS is for a utility cabinet
- * Side mounted drawer guides

RS12 (Use w/ B12)	\$85	\$85	N/A
RS15 (Use w/ B15)	\$93	\$93	N/A
RS18 (Use w/ B18)	\$99	\$99	N/A
RS21 (Use w/ B21)	\$102	\$102	N/A
RS24 (Use w/ B24 or U24)	\$107	\$107	N/A
RS27 (Use w/ B27)	\$111	\$111	N/A
RS30 (Use w/ B30) 1 per opening	\$125	\$93	N/A
RS33 (Use w/ B33) 1 per opening	\$140	\$97	N/A
RS36 (Use w/ B36) 1 per opening	\$158	\$99	N/A

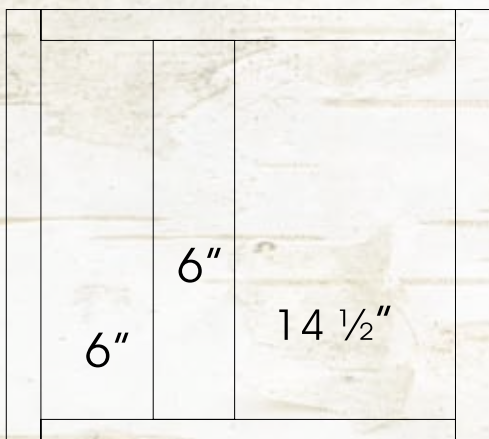
Modification Services

* This special order service requires a minimum 5 day lead time

RG (Route for Glass)	\$137	\$137	\$137
FI* (Finished Interior)	\$184	\$184	\$184
DD* (Decreased Depth) 1 Per Drawer Box	\$204	\$204	\$204
ID (Increased Depth)	\$316	\$316	\$316

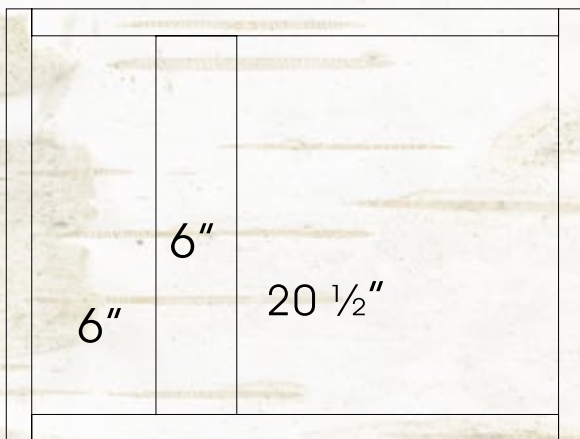
The pics in the specbook are for dimension purposes ONLY and do NOT represent the cabinet styles.

WBC Cabinet Door Specifications



WBC 3030

- ✓ Door: 17 ¹/₂" Wide x 29" Tall
- ✓ Can be pulled to 34 ¹/₄"
- ✓ Must be pulled to 30 ³/₄"

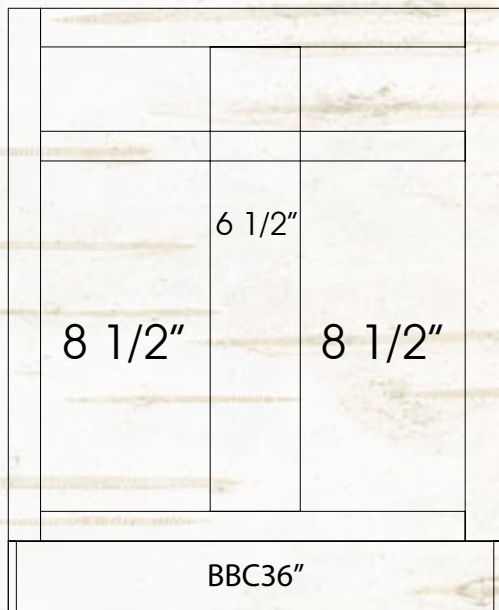


WBC 3630

- ✓ 2 Door: each 11 ¹¹/₁₆" Wide x 29" Tall
- ✓ Can be pulled to 40 ¹/₄"
- ✓ Must be pulled to 36 ³/₄"

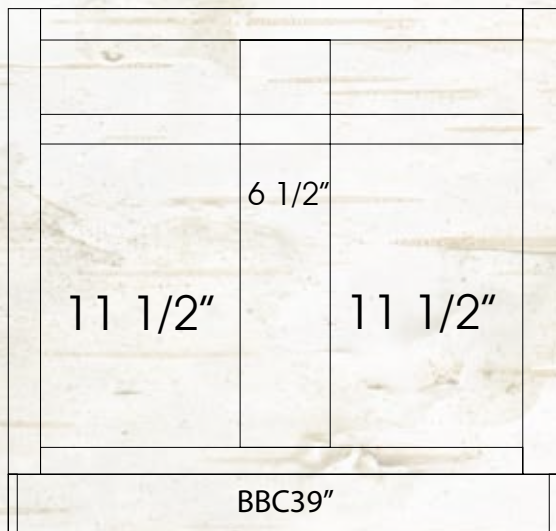
- ✓ All Rails and Stiles are 1 ³/₄"
- ✓ All WBC's are Reversible

BBC Cabinet Door Specifications



Actual Cabinet Width 27"
Base 12" Doors & Drawer

- ✓ Door: $11\frac{1}{2}"$ Wide x $22\frac{1}{2}"$ Tall
 - ✓ Can be pulled to $40\frac{1}{2}"$
 - ✓ Must be pulled to $36\frac{3}{4}"$
- (Remember to allow for Hardware)

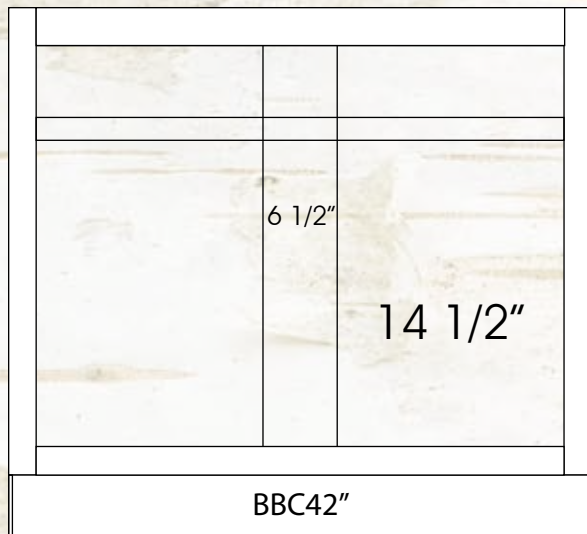


Actual Cabinet Width 33"
Base 15" Doors & Drawer

- ✓ Door: $14\frac{1}{2}"$ Wide x $22\frac{1}{2}"$ Tall
 - ✓ Can be pulled to $43\frac{1}{2}"$
 - ✓ Must be pulled to $39\frac{3}{4}"$
- (Remember to allow for Hardware)

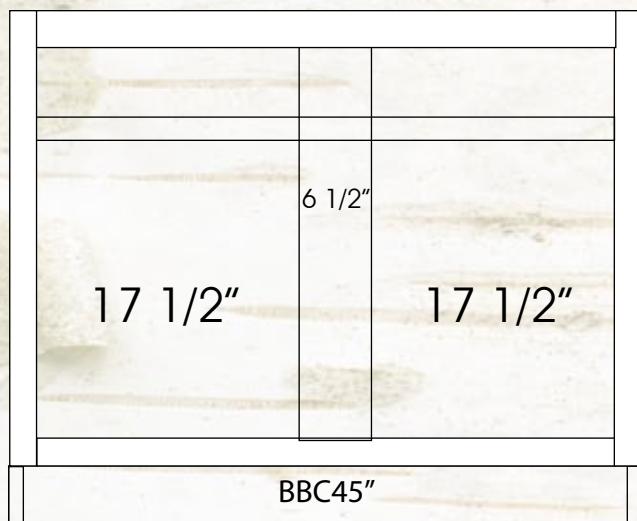
- ✓ All Rails and Stiles are $1\frac{3}{4}"$
- ✓ All WBC's are Reversible

BBC Cabinet Door Specifications



Actual Cabinet Width 39"
Base 18" Doors & Drawer

- ✓ Door: $17\frac{1}{2}"$ Wide x $22\frac{1}{2}"$ Tall
 - ✓ Can be pulled to $46\frac{1}{2}"$
 - ✓ Must be pulled to $42\frac{3}{4}"$
- (Remember to allow for Hardware)



Actual Cabinet Width 45"
Base 21" Doors & Drawer

- ✓ Door: $20\frac{1}{2}"$ Wide x $22\frac{1}{2}"$ Tall
 - ✓ Can be pulled to $49\frac{1}{2}"$
 - ✓ Must be pulled to $45\frac{3}{4}"$
- (Remember to allow for Hardware)

- ✓ All Rails and Stiles are $1\frac{3}{4}"$
- ✓ All WBC's are Reversible

Kitchen and Bath
SOLUTIONS

SPECIFICATIONS | PRICE LIST

www.KandBSolutions.com

560 Webb Industrial Drive, Marietta, GA 30062-2451 • 770-974-1777 • Fax 770-429-1743